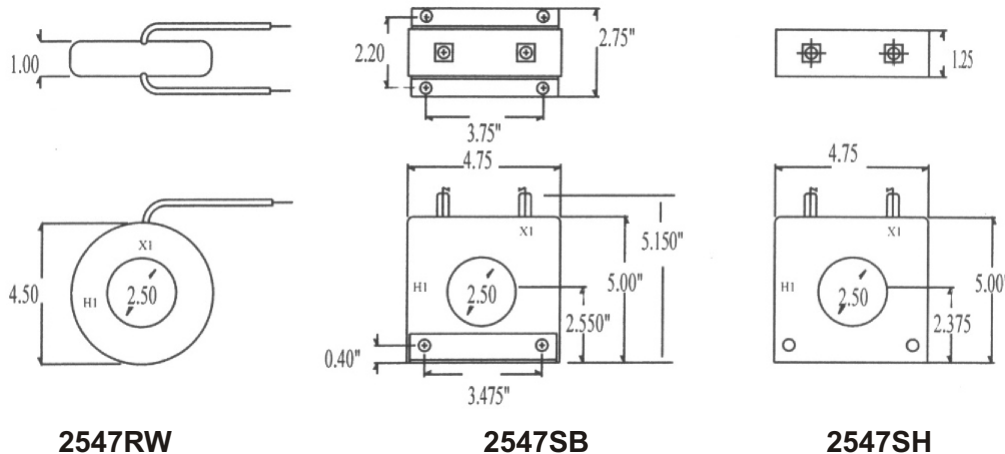


Current Transformers

Window Diameter: 2.50"
Continuous Thermal Rating: 1.33 at 30 C. amb.;
1.0 at 55 C. amb. Average.

Application: Ammeters and Wattmeters and Relays.
Insulation Class: 0.6 kV. BIL 10kV. full wave 50-400 Hz.
Fully encapsulated.

Standard 5 amp secondary, others available.



2547RW

2547SB

2547SH

Model nbr.

2547RW
SB
SH

To order, please complete the model number with the appropriate suffix.
eg. 2547SH-100

- ▶ Flexible leads are UL 3173 125 degree C.
- ▶ CSA approved, # 16 AWG 24" long. Nonstandard length to be specified.
- ▶ Terminals are brass No. 10-32 UNC.
- ▶ Approximate weight 1.5 lb.
- ▶ Additional ratios available.

Catalogue nbr. Suffix	Current Ratio	Accuracy @ 60Hz	Burden VA @ 60Hz
-100	100:5	± 2%	2.5
-150	150:5	± 1%	5.0
-200	200:5	± 1%	5.0
-250	250:5	± 1%	5.0
-300	300:5	± 1%	12.5
-400	400:5	± 1%	15.0
-500	500:5	± 1%	25.0
-600	600:5	± 1%	30.0
-750	750:5	± 1%	30.0
-800	800:5	± 1%	35.0
-1000	1000:5	± 1%	30.0
-1200	1200:5	± 1%	35.0
-1500	1500:5	± 1%	40.0
-1600	1600:5	± 1%	45.0