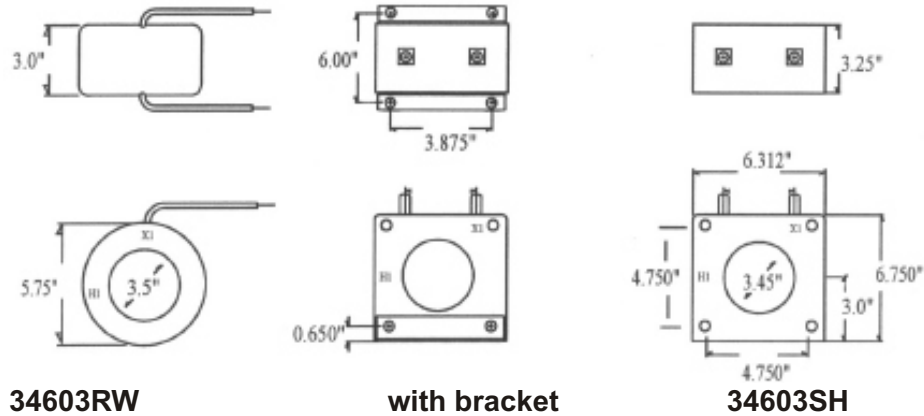


**Current Transformers**

Window Diameter: 3.5"  
Continuous Thermal Rating: 1.33 at 30 C. amb.;  
1.0 at 55 C. amb. Average.

Application: Ammeters and Wattmeters and Relays.  
Insulation Class: 0.6 kV. BIL 10kV. full wave 50-400 Hz.  
Fully encapsulated.

Standard 5 amp secondary, others available.



**34603RW**

**with bracket**

**34603SH**

**Model nbr.**

**34603RW**  
**34603SH**

To order, please complete the model number with the appropriate suffix.  
eg. 34603RW-100

- ▶ Flexible leads are UL 3134 150 degree C.
- ▶ CSA approved, # 12 AWG 24" long. Nonstandard length to be specified.
- ▶ Terminals are brass No. 10-32 UNC.
- ▶ Optional mounting bracket 34603MBK.
- ▶ Approximate weight 11 lb.
- ▶ Additional ratios available.

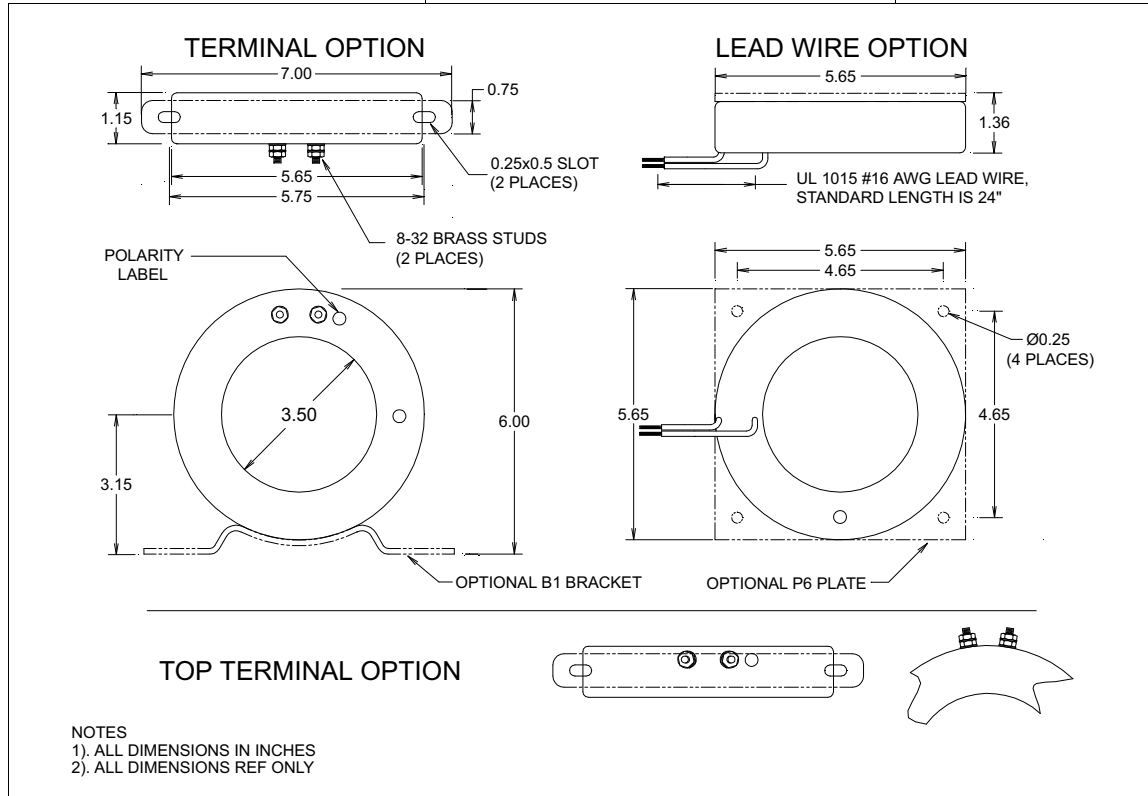
Catalogue nbr. Suffix	Current Ratio	VA for $\pm 1\%$ Class	ANSI Metering Class @ 60Hz				
			BO.1	BO.2	BO.5	BO.9	B1.8
-100	100:5	C10	1.2	1.2	2.4	-	-
-150	150:5	C10	0.6	0.6	1.2	2.4	-
-200	200:5	C10	0.6	0.6	1.2	2.4	-
-250	250:5	C20	0.3	0.3	0.6	1.2	2.4
-300	300:5	C20	0.3	0.3	0.6	0.6	1.2
-400	400:5	C20	0.3	0.3	0.3	0.6	0.6
-500	500:5	C20	0.3	0.3	0.3	0.3	0.6
-600	600:5	C20	0.3	0.3	0.3	0.3	0.6
-750	750:5	C50	0.3	0.3	0.3	0.3	0.3
-800	800:5	C50	0.3	0.3	0.3	0.3	0.3
-1000	1000:5	C50	0.3	0.3	0.3	0.3	0.3
-1200	1200:5	C50	0.3	0.3	0.3	0.3	0.3
-1500	1500:5	C50	0.3	0.3	0.3	0.3	0.3
-1600	1600:5	C50	0.3	0.3	0.3	0.3	0.3
-2000	2000:5	C50	0.3	0.3	0.3	0.3	0.3

CURRENT TRANSFORMER  
MODEL MW

3.50" I.D.

PAGE No 1-26

REV 15DEC00



**Specifications**

Secondary sources 5 amps AC at rated F.S. primary current  
Nominal operating frequency range is 50-400HZ  
Thermal rating factor is 1.33 @ 30C for ratios up to 2000:5A,  
1.15 @ 30C for ratios of 2000:5A and above  
Insulation voltage class is 0.6KV BIL 10KV

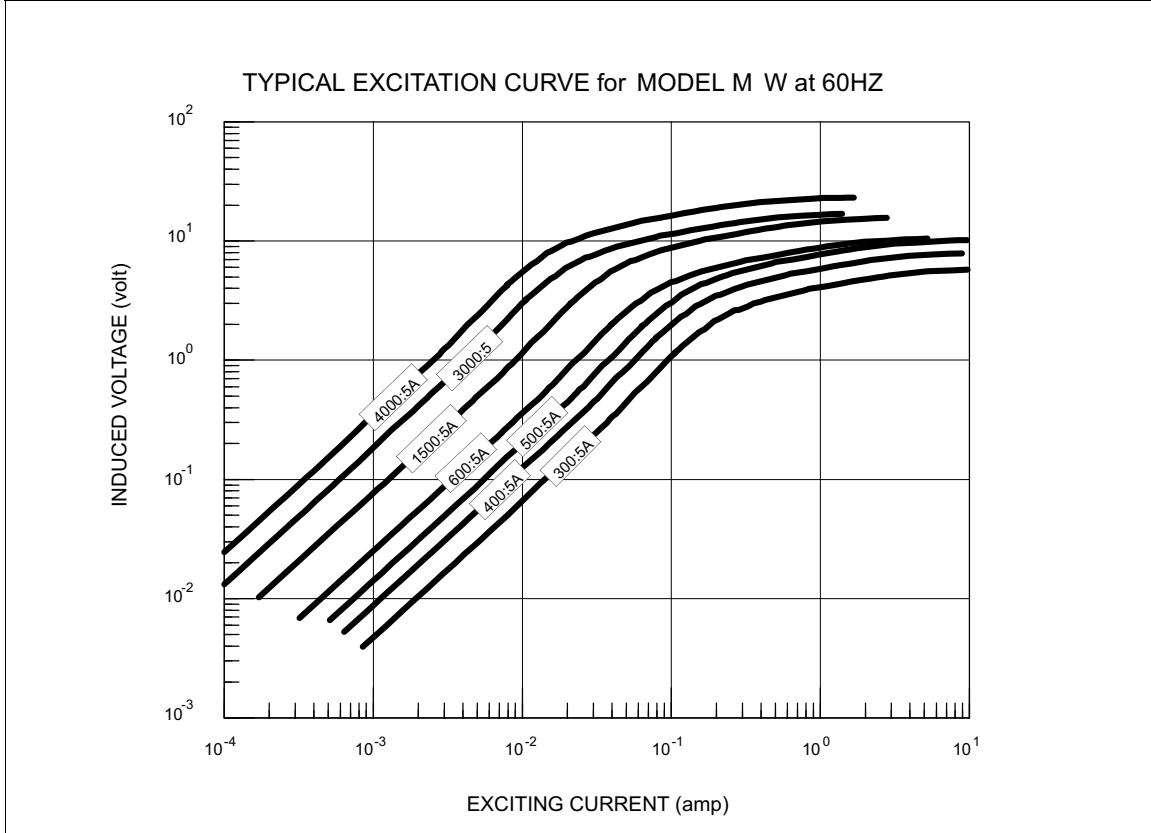
For indoor applications only  
Reference documents IEEE C57.13, UL1244, and IEC 44-1  
Enclosure is made of glass-filled Nylon, color is black  
Optional bracket is aluminum, optional plate is XX phenolic

**Options, contact Factory for information**

UL and Canadian UL Recognized Component. File E100575  
2.0, 5.0, and 10 VAC output at F.S. primary amperage. Other non-standard ratings also available.  
1, 0.2, and 0.1 A output at F.S. primary amperage. Other non-standard ratings also available  
8-32 Brass Stud Terminals or #16 AWG UL 1015 Lead Wires. Choice of stud location.

Custom lead wire lengths and types  
Thermal ratings above 1.33 for selected ratios.  
Available with B3 and B31 brackets. See Bracket Data Section for dimensions.  
Center tap and custom multi tap winding arrangements

<b>3.50" I.D.</b>	<b>CURRENT TRANSFORMER</b>
PAGE No 1-27	<b>MODEL MW</b>
REV 15DEC00	



NUMBER *	RATIO	ACCURACY @ 60HZ		NOMINAL WINDING RESISTANCE (ohm)
		± %	BURDEN (VA)	
MW-300-00-xxx	300:5A	1.5	2.0	0.06
MW-400-00-xxx	400:5A	1.0	2.0	0.08
MW-500-00-xxx	500:5A	1.0	4.0	0.10
MW-600-00-xxx	600:5A	1.0	6.0	0.12
MW-800-00-xxx	800:5A	1.0	10	0.17
MW-1000-00-xxx	1000:5A	1.0	12	0.22
MW-1200-00-xxx	1200:5A	1.0	20	0.25
MW-1500-00-xxx	1500:5A	1.0	15	0.50
MW-1600-00-xxx	1600:5A	1.0	15	0.53
MW-2000-00-xxx	2000:5A	1.0	12	0.67
MW-2500-00-xxx	2500:5A	1.0	15	0.85
MW-3000-00-xxx	3000:5A	1.0	25	1.0
MW-4000-00-xxx	4000:5A	1.0	45	1.4

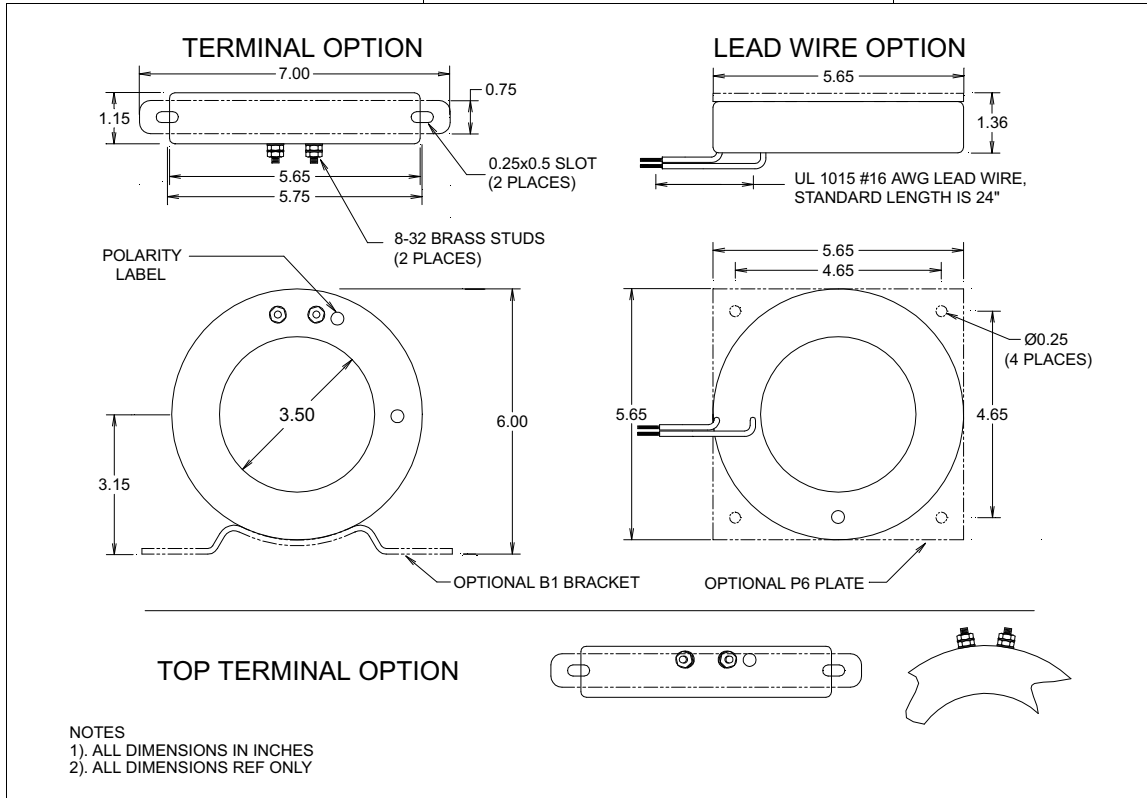
\* "xxx" describes termination: "T" FOR BRASS STUDS, "TT" FOR BRASS STUDS in top terminal configuration, and "Lyyy" FOR LEAD WIRES (Where "yyy" is the lead length in inches. For example, "L24" represents 24 inch long lead wires.)

CURRENT TRANSFORMER  
**MODEL MWX**

**3.50" I.D.**

PAGE No 1-28

REV 15DEC00



**Specifications**

Secondary sources 5 amps AC at rated F.S. primary current  
 Nominal operating frequency range is 50-400HZ  
 Thermal rating factor is 1.33 @ 30C for all ratios  
 Insulation voltage class is 0.6KV BIL 10KV  
 For indoor applications only

Reference documents IEEE C57.13, UL1244, and IEC 44-1  
 Enclosure is made of glass-filled Nylon, color is black  
 Optional bracket is aluminum, optional plate is XX phenolic

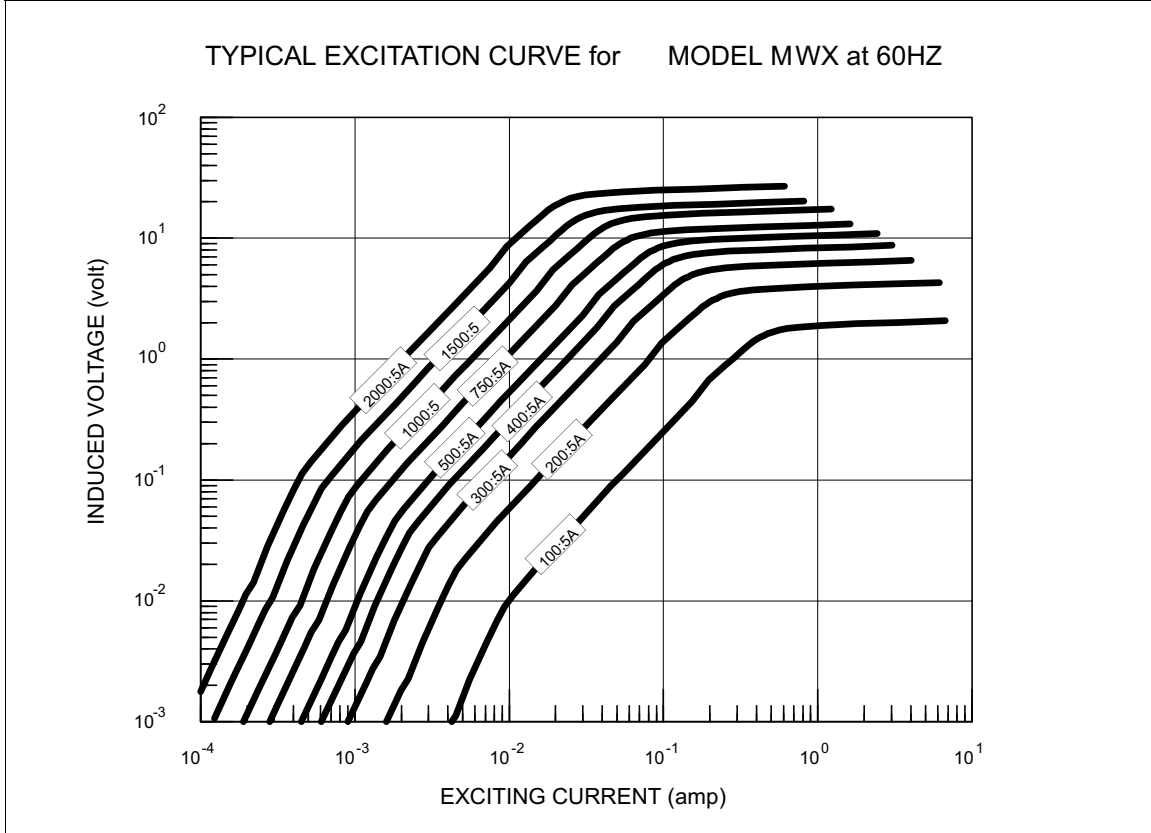
**Options, contact Factory for information**

UL and Canadian UL Recognized Component. File E100575  
 8-32 Brass Stud Terminals or #16 AWG UL 1015 Lead Wires.  
 Choice of stud location.  
 Custom lead wire lengths and types  
 Thermal ratings above 1.33 for selected ratios.

Available with B3 and B31 brackets. See Bracket Data Section for dimensions.

Center tap and custom multi tap winding arrangements

<b>3.50" I.D.</b>	<b>CURRENT TRANSFORMER MODEL MWX</b>
PAGE No 1-29	
REV 15DEC00	



NUMBER *	RATIO	ANSI ACCURACY CLASS @ 60HZ					RELAY CLASS	NOMINAL WINDING RESISTANCE (ohm)
		B0.1	B0.2	B0.5	B0.9	B1.8		
MWX-100-00-xxx	100:5A	4.8	-	-	-	-	-	0.02
MWX-200-00-xxx	200:5A	1.2	-	-	-	-	-	0.04
MWX-300-00-xxx	300:5A	0.6	1.2	-	-	-	-	0.06
MWX-400-00-xxx	400:5A	0.6	0.6	1.2	-	-	-	0.08
MWX-500-00-xxx	500:5A	0.3	0.6	1.2	1.2	-	-	0.10
MWX-600-00-xxx	600:5A	0.3	0.3	0.6	1.2	-	-	0.12
MWX-750-00-xxx	750:5A	0.3	0.3	0.6	0.6	1.2	-	0.14
MWX-1000-00-xxx	1000:5A	0.3	0.3	0.3	0.6	0.6	C10	0.19
MWX-1200-00-xxx	1200:5A	0.3	0.3	0.3	0.6	0.6	C10	0.25
MWX-1500-00-xxx	1500:5A	0.3	0.3	0.3	0.3	0.6	C10	0.32
MWX-2000-00-xxx	2000:5A	0.3	0.3	0.3	0.3	0.3	C20	0.44

\* "xxx" describes termination: "T" FOR BRASS STUDS, "TT" FOR BRASS STUDS in top terminal configuration, and "Lyyy" FOR LEAD WIRES (Where "yyy" is the lead length in inches. For example, "L24" represents 24 inch long lead wires.)