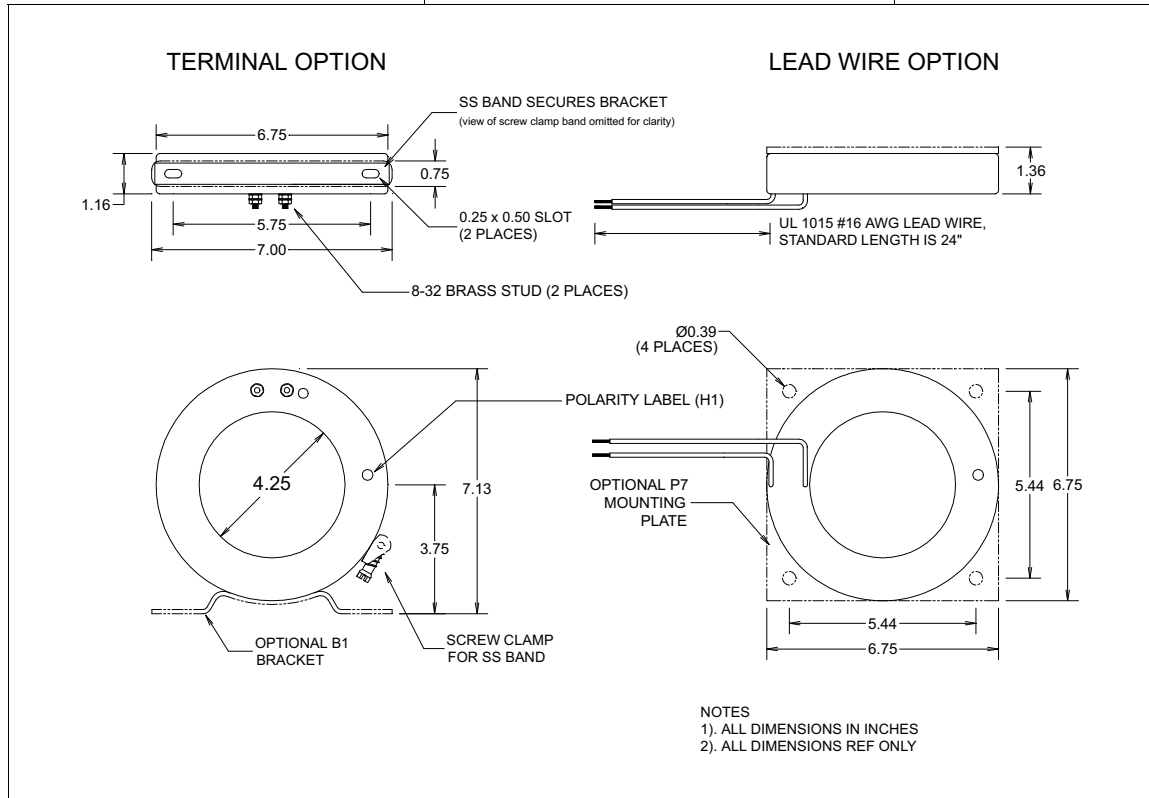


CURRENT TRANSFORMER
MODEL N

4.25" I.D.

PAGE No 1-30

REV 15DEC00



Specifications

Secondary sources 5 amps AC at rated F.S. primary current
Nominal operating frequency range is 50-400HZ
Thermal rating factor is 1.33 @ 30C for ratios up to 3000:5A,
1.15 @ 30C for ratios of 3000:5A and above
Insulation voltage class is 0.6KV BIL 10KV

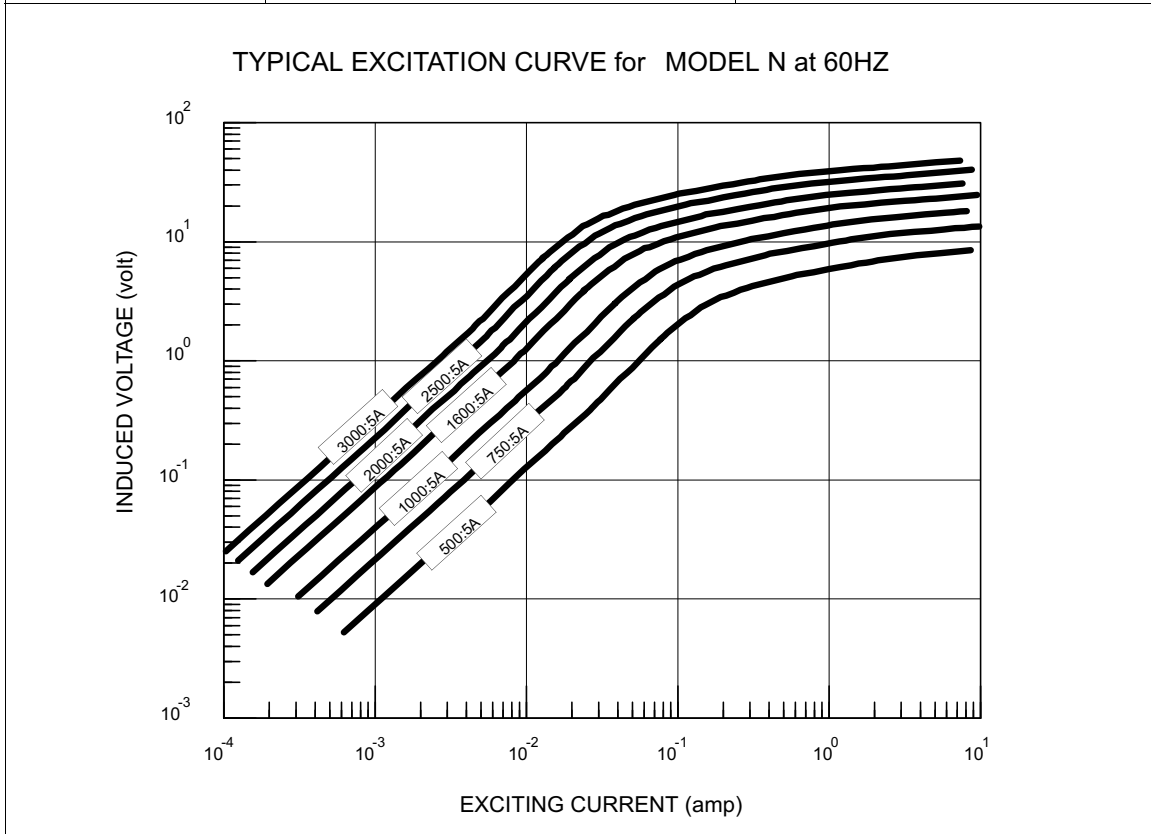
For indoor applications only
Reference documents IEEE C57.13, UL1244, and IEC 44-1
Enclosure is glass-filled nylon, color is black
Optional bracket is aluminum

Options, contact Factory for information

UL and Canadian UL Recognized Component. File E100575
2.0, 5.0, and 10 VAC output at F.S. primary amperage. Other non-
standard ratings also available.
1, 0.2, and 0.1 A output at F.S. primary amperage. Other non-
standard ratings also available
8-32 Brass Stud Terminals or #16 AWG UL 1015 Lead Wires
Custom lead wire lengths and types

Thermal ratings above 1.33 for selected ratios.
Center tap and custom multi tap winding arrangements

4.25" I.D.	CURRENT TRANSFORMER MODEL N
PAGE No 1-31	
REV 15DEC00	



NUMBER *	RATIO	ACCURACY @ 60HZ, pf = 0.95		NOMINAL WINDING RESISTANCE (ohm)
		± %	BURDEN (VA)	
N-500-00-xxx	500:5A	1.0	3.0	0.14
N-750-00-xxx	750:5A	1.0	7.5	0.21
N-1000-00-xxx	1000:5A	1.0	15	0.28
N-1600-00-xxx	1600:5A	1.0	25	0.41
N-2000-00-xxx	2000:5A	1.0	40	0.52
N-2500-00-xxx	2500:5A	1.0	40	0.81
N-3000-00-xxx	3000:5A	1.0	50	1.0

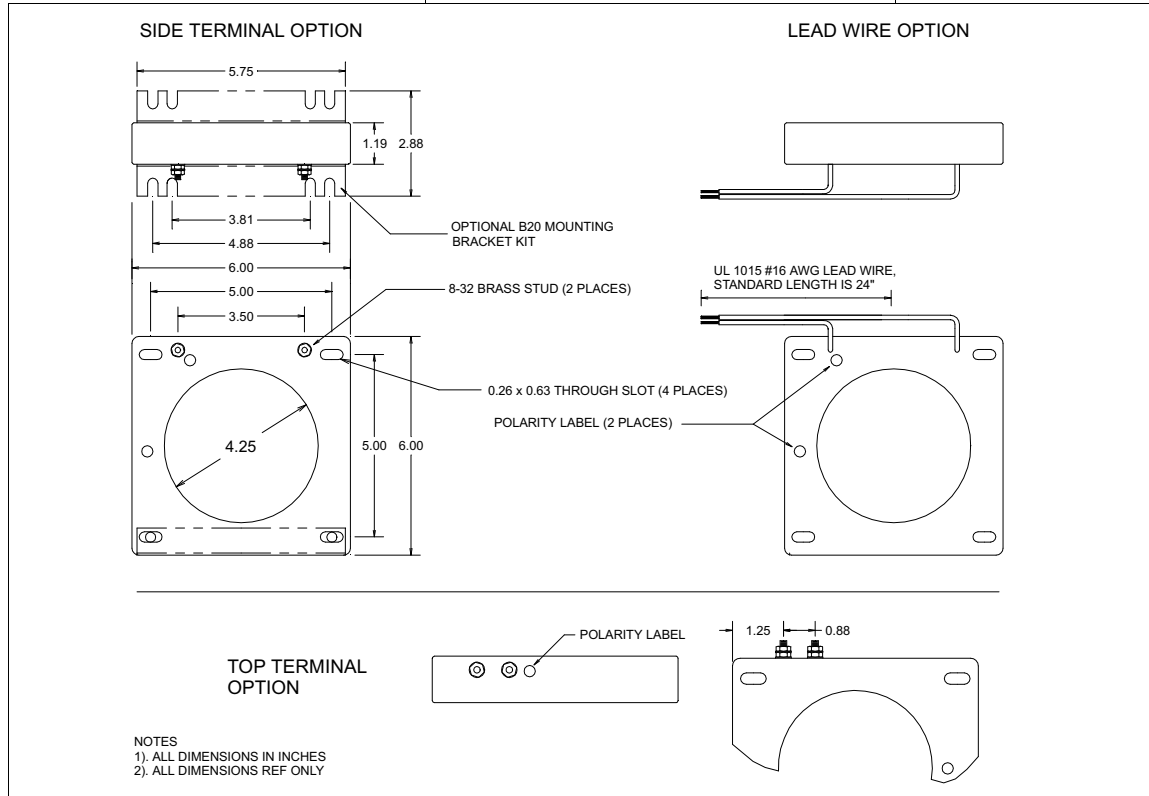
* "xxx" describes termination: "T" FOR BRASS STUDS, "Lyyy" FOR LEAD WIRES (Where "yyy" is the lead length in inches. For example, "L24" represents 24 inch long lead wires.)

CURRENT TRANSFORMER
MODEL ND

4.25" I.D.

PAGE No 1-32

REV 15DEC00



NOTES
1) ALL DIMENSIONS IN INCHES
2) ALL DIMENSIONS REF ONLY

Specifications

Secondary sources 5 amps AC at rated F.S. primary current
Nominal operating frequency range is 50-400HZ
Thermal rating factor is 1.33 @ 30C for ratios up to 4250:5A,
1.15 @ 30C for ratios of 4250:5A and above
Insulation voltage class is 0.6KV BIL 10KV

For indoor applications only
Reference documents IEEE C57.13, UL1244, and IEC 44-1
Enclosure is made of glass-filled Nylon, color is black
Optional bracket is steel

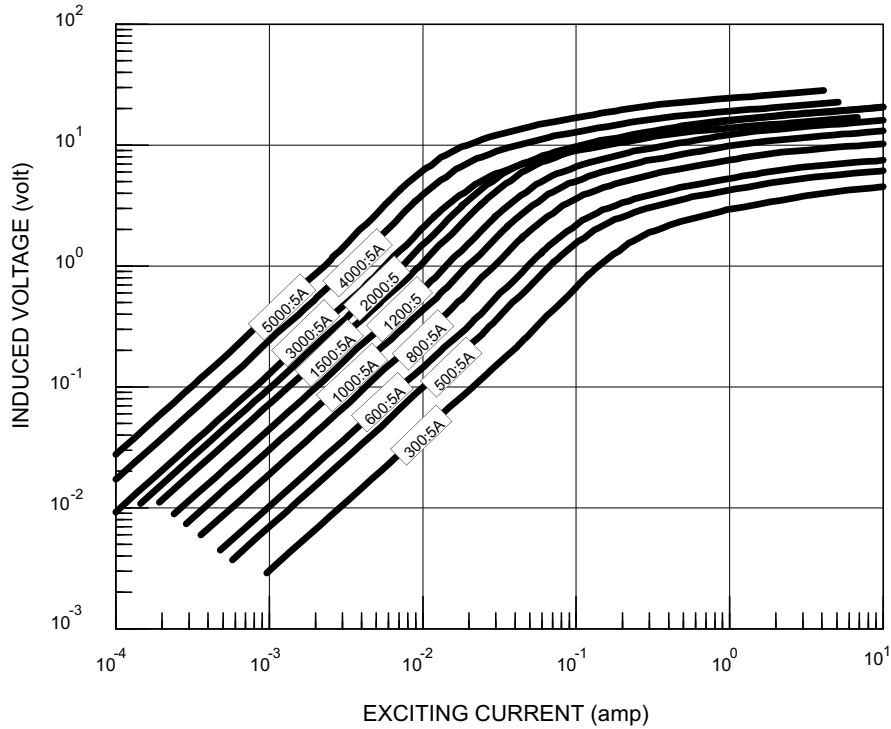
Options, contact Factory for information

UL and Canadian UL Recognized Component. File E100575
2.0, 5.0, and 10 VAC output at F.S. primary current. Other non-standard ratings also available
1, 0.2, and 0.1 A output at F.S. primary current. Other non-standard ratings also available
8-32 Brass Stud Terminals or #16 AWG UL 1015 Lead Wires.
Choice of stud location

Custom lead wire lengths and types
Thermal ratings above 1.33 for selected ratios
Available with B20 bracket kit. See Bracket Data Section for dimensions
Center tap and custom multi tap winding arrangements

4.25" I.D.	CURRENT TRANSFORMER MODEL ND
PAGE No 1-33	
REV 15DEC00	

TYPICAL EXCITATION CURVE for MODEL ND at 60HZ



NUMBER *	RATIO	ACCURACY @ 60HZ		NOMINAL WINDING RESISTANCE (ohm)
		± %	BURDEN (VA)	
ND-300-00-xxx	300:5A	1.5	2.0	0.07
ND-500-00-xxx	500:5A	1.0	2.5	0.11
ND-600-00-xxx	600:5A	1.0	4.0	0.14
ND-800-00-xxx	800:5A	1.0	8.5	0.18
ND-1000-00-xxx	1000:5A	1.0	15	0.22
ND-1200-00-xxx	1200:5A	1.0	20	0.27
ND-1500-00-xxx	1500:5A	1.0	25	0.33
ND-1600-00-xxx	1600:5A	1.0	30	0.36
ND-2000-00-xxx	2000:5A	1.0	25	0.41
ND-2500-00-xxx	2500:5A	1.0	25	0.52
ND-3000-00-xxx	3000:5A	1.0	20	0.54
ND-4000-00-xxx	4000:5A	1.0	25	0.76
ND-5000-00-xxx	5000:5A	1.0	30	1.2

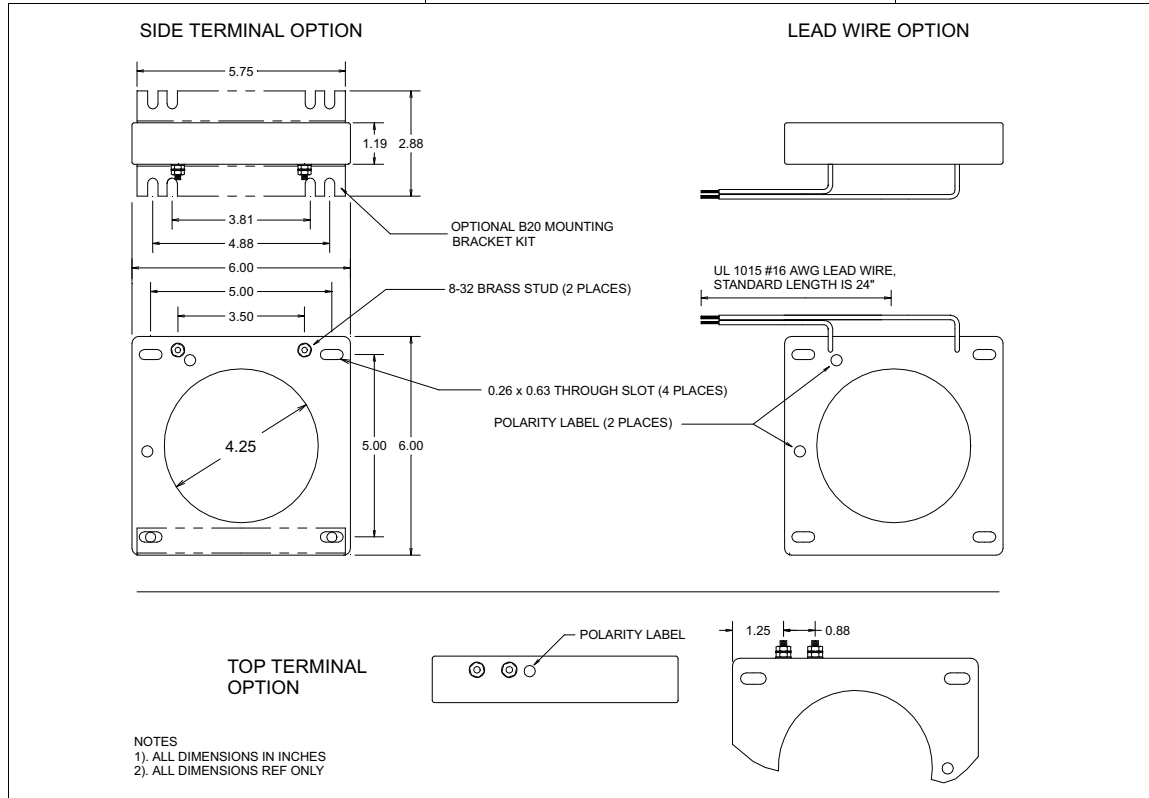
* "xxx" describes termination: "T" FOR BRASS STUDS, "TT" FOR BRASS STUDS in top terminal configuration, and "Lyyy" FOR LEAD WIRES (Where "yyy" is the lead length in inches. For example, "L24" represents 24 inch long lead wires.)

CURRENT TRANSFORMER
MODEL NDX

4.25" I.D.

PAGE No 1-34

REV 15DEC00



Specifications

Secondary sources 5 amps AC at rated F.S. primary current
 Nominal operating frequency range is 50-400HZ
 Thermal rating factor is 1.33 @ 30C for ratios up to 4250:5A,
 1.15 @ 30C for ratios of 4250:5A and above
 Insulation voltage class is 0.6KV BIL 10KV

For indoor applications only
 Reference documents IEEE C57.13, UL1244, and IEC 44-1
 Enclosure is made of glass-filled Nylon, color is black
 Optional bracket is steel

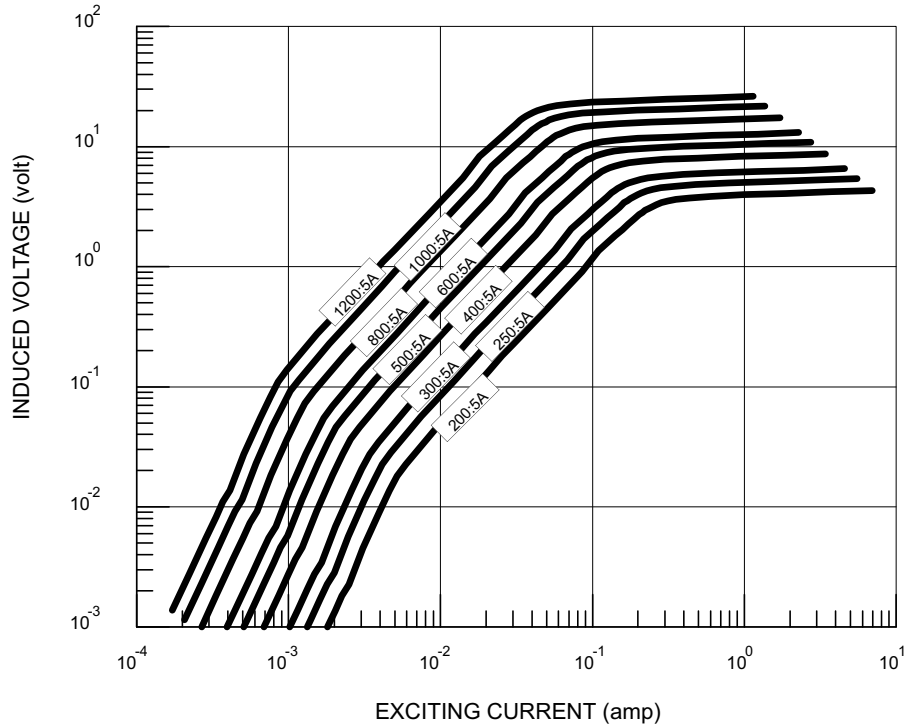
Options, contact Factory for information

UL and Canadian UL Recognized Component. File E100575
 2.0, 5.0, and 10 VAC output at F.S. primary current. Other non-standard ratings also available
 1, 0.2, and 0.1 A output at F.S. primary current. Other non-standard ratings also available
 8-32 Brass Stud Terminals or #16 AWG UL 1015 Lead Wires.
 Choice of stud location

Custom lead wire lengths and types
 Thermal ratings above 1.33 for selected ratios
 Available with B20 bracket kit. See Bracket Data Section for dimensions
 Center tap and custom multi tap winding arrangements

4.25" I.D.	CURRENT TRANSFORMER MODEL NDX
PAGE No 1-35	
REV 15DEC00	

TYPICAL EXCITATION CURVE for MODEL NDX at 60HZ



NUMBER *	RATIO	ACCURACY @ 60HZ		NOMINAL WINDING RESISTANCE (ohm)
		± %	BURDEN (VA)	
NDX-300-00-xxx	300:5A	1.0	6.0	0.05
NDX-500-00-xxx	500:5A	1.0	20	0.08
NDX-600-00-xxx	600:5A	1.0	25	0.12
NDX-800-00-xxx	800:5A	1.0	50	0.16
NDX-1000-00-xxx	1000:5A	1.0	75	0.22
NDX-1200-00-xxx	1200:5A	1.0	100	0.31
NDX-1500-00-xxx	1500:5A	1.0	80	0.33
NDX-1600-00-xxx	1600:5A	1.0	80	0.36
NDX-2000-00-xxx	2000:5A	1.0	100	0.44
NDX-2500-00-xxx	2500:5A	1.0	65	0.48
NDX-3000-00-xxx	3000:5A	1.0	65	0.53
NDX-4000-00-xxx	4000:5A	1.0	75	0.76

* "xxx" describes termination: "T" FOR BRASS STUDS, "TT" FOR BRASS STUDS in top terminal configuration, and "Lyyy" FOR LEAD WIRES (Where "yyy" is the lead length in inches. For example, "L24" represents 24 inch long lead wires.)



W.I.C.C. Ltd
119 MULLER RD
PO Box 252
WASHINGTON IL 61571
(309)-444-4125
FAX (309)-444-3313

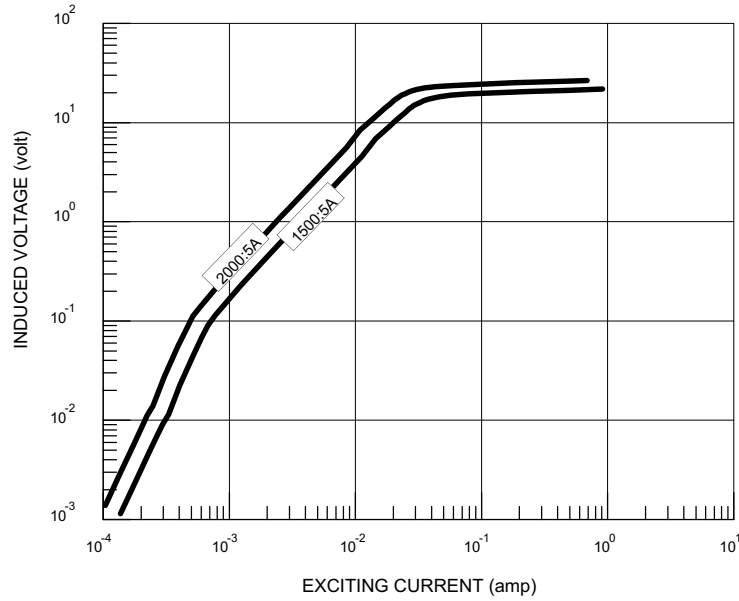
CURRENT TRANSFORMER MODEL NDX

4.25" I.D.

PAGE No 1-36

REV 15DEC00

TYPICAL EXCITATION CURVE for WICC MODEL NDX at 60HZ



TYPICAL EXCITATION CURVE for WICC MODEL NDX at 60HZ

