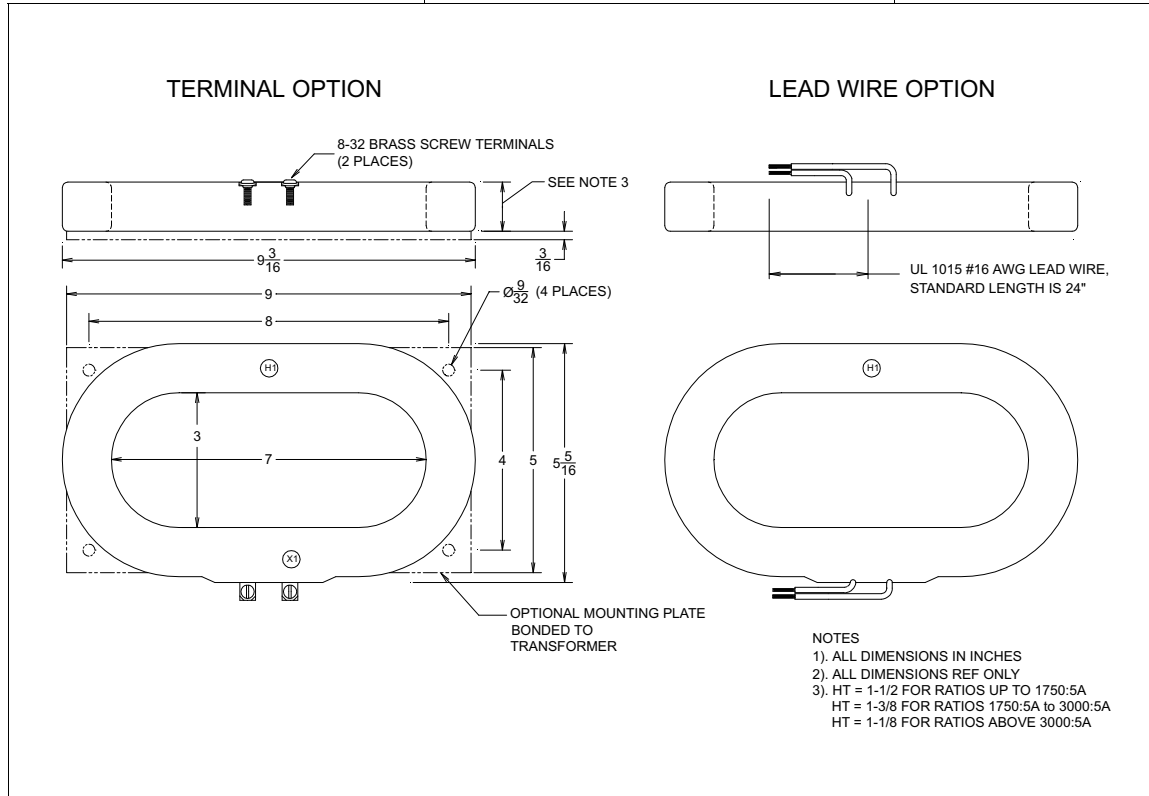


CURRENT TRANSFORMER MODEL J1

3" x 7"

PAGE No 2-2

REV 18DEC00



Specifications

Secondary sources 5 amps AC at rated F.S. primary current

Nominal operating frequency range is 50-400HZ

Thermal rating factor is 1.33 @ 30C for all ratios

Insulation voltage class is 0.6KV BIL 10KV

For indoor applications only

Reference documents IEEE C57.13, UL1244, CSA CAN3-C13-M83, and IEC 44-1

Enclosure is multi-layer tape buildup with heavy vinyl finish, color is black

Optional plate is XX phenolic

UL and Canadian UL Recognized Component. File E100575

Options, contact Factory for information

2.0, 5.0, and 10 VAC output at F.S. primary amperage. Other non-standard ratings also available.

Available with BB4 bus bar brackets. See Bracket Data Section for dimensions.

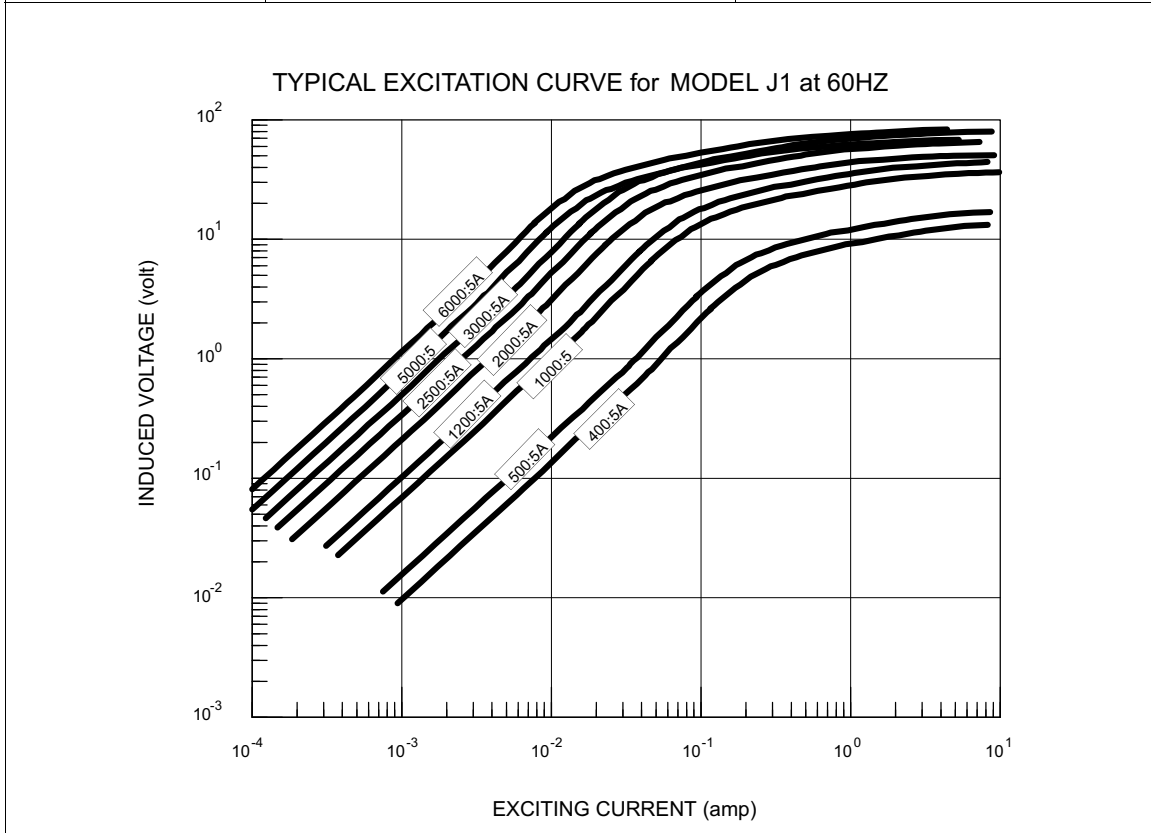
1, 0.2, and 0.1 A output at F.S. primary amperage. Other non-standard ratings also available

8-32 Screw Terminals or #16 AWG UL 1015 Lead Wires

Custom lead wire lengths and types

Thermal ratings above 1.33 for selected ratios.

3" x 7"	CURRENT TRANSFORMER MODEL J1
PAGE No 2-3	
REV 18DEC00	



NUMBER *	RATIO	ACCURACY @ 60HZ		NOMINAL WINDING RESISTANCE (ohm)
		± %	BURDEN (VA)	
J1-400-00-xxx	400:5A	1.0	5.0	0.09
J1-500-00-xxx	500:5A	1.0	8.0	0.12
J1-600-00-xxx	600:5A	1.0	12	0.17
J1-1000-00-xxx	1000:5A	1.0	35	0.28
J1-1200-00-xxx	1200:5A	1.0	55	0.34
J1-1500-00-xxx	1500:5A	1.0	75	0.52
J1-1600-00-xxx	1600:5A	1.0	75	0.55
J1-2000-00-xxx	2000:5A	1.0	65	0.73
J1-2500-00-xxx	2500:5A	1.0	85	0.91
J1-3000-00-xxx	3000:5A	1.0	100	1.1
J1-4000-00-xxx	4000:5A	1.0	75	1.1
J1-5000-00-xxx	5000:5A	1.0	85	1.4
J1-6000-00-xxx	6000:5A	1.0	100	1.7

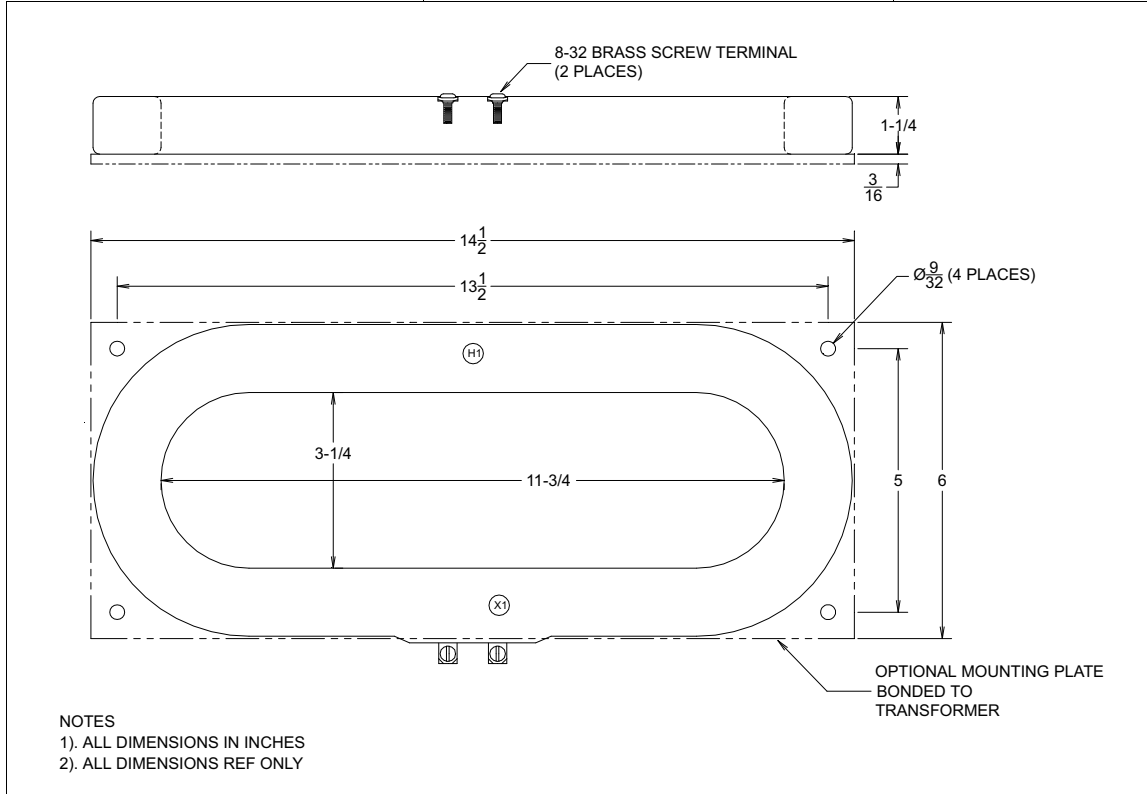
* "xxx" describes termination: "T" FOR BRASS SCREW TERMINALS and "Ly" FOR LEAD WIRES (Where "yy" is the lead length in inches. For example, "L24" represents 24 inch long lead wires.)

CURRENT TRANSFORMER
MODEL J3

3-1/4" x 11-3/4"

PAGE No 2-4

REV 18DEC00



Specifications

Secondary sources 5 amps AC at rated F.S. primary current
Nominal operating frequency range is 50-400HZ
Thermal rating factor is 1.33 @ 30C for all ratios
Insulation voltage class is 0.6KV BIL 10KV
For indoor applications only

Reference documents IEEE C57.13, UL1244, CSA CAN3-C13-M83,
and IEC 44-1

Enclosure is multi-layer tape buildup with heavy vinyl finish, color is
black

Optional plate is XX phenolic

Options, contact Factory for information

2.0, 5.0, and 10 VAC output at F.S. primary amperage. Other non-
standard ratings also available.

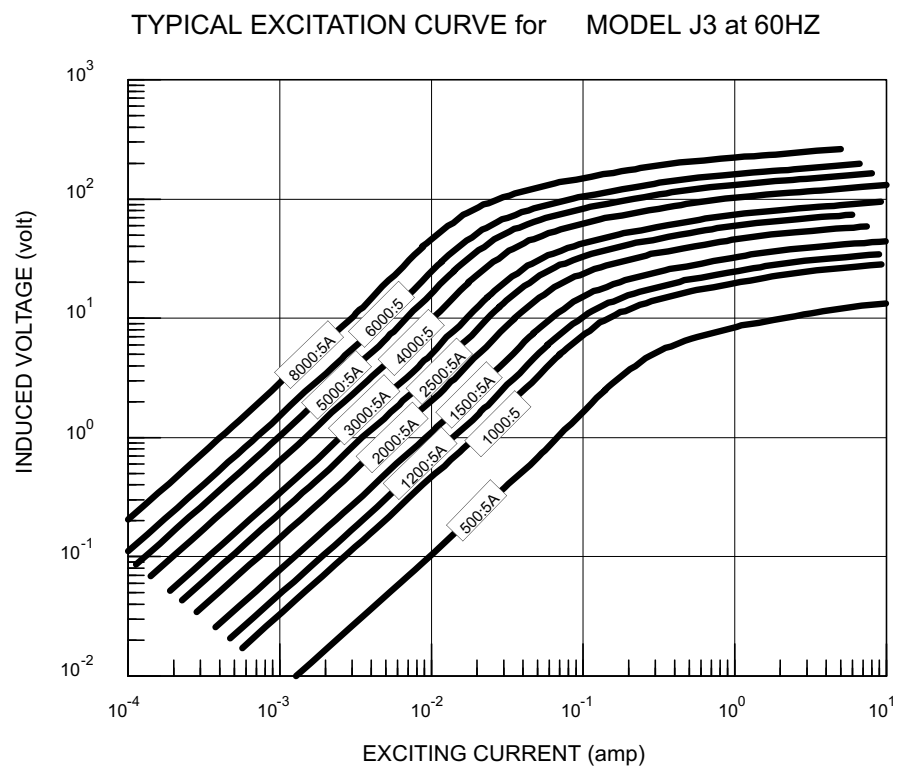
1 A output at F.S. primary amperage. Other non-standard ratings
also available

Thermal ratings above 1.33 for selected ratios

8-32 Screw Terminals or #16 AWG UL 1015 Lead Wires

Custom lead wire lengths and types

Available with B71 bus bar brackets. See Bracket Data Section for
dimensions.



NUMBER *	RATIO	ACCURACY @ 60HZ		NOMINAL WINDING RESISTANCE (ohm)
		± %	BURDEN (VA)	
J3-500-00-xxx	500:5A	1.0	3.5	0.10
J3-1000-00-xxx	1000:5A	1.0	15	0.32
J3-1200-00-xxx	1200:5A	1.0	20	0.37
J3-1500-00-xxx	1500:5A	1.0	40	0.46
J3-2000-00-xxx	2000:5A	1.0	75	0.61
J3-2500-00-xxx	2500:5A	1.0	100	0.76
J3-3000-00-xxx	3000:5A	1.0	100	0.91
J3-4000-00-xxx	4000:5A	1.0	100	1.3
J3-5000-00-xxx	5000:5A	1.0	100	1.6
J3-6000-00-xxx	6000:5A	1.0	100	2.0
J3-8000-00-xxx	8000:5A	1.0	100	2.7

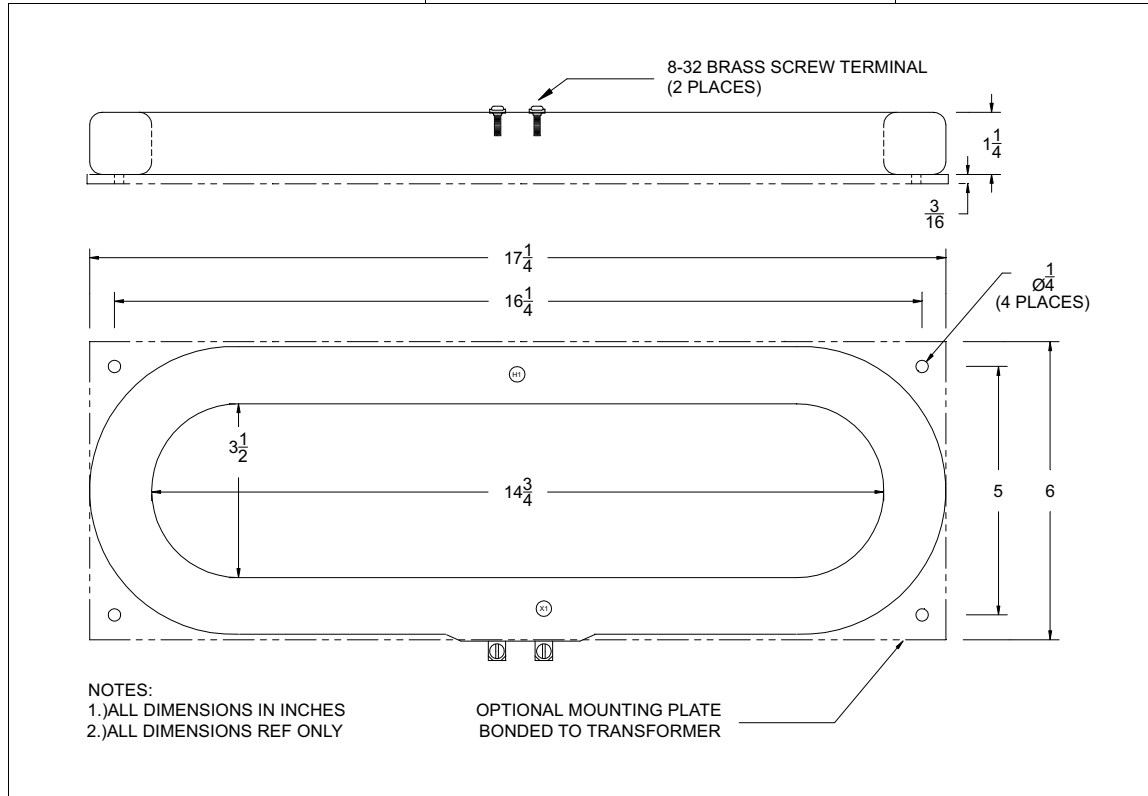
* "xxx" describes termination: "T" FOR BRASS SCREW TERMINALS and "Lyyy" FOR LEAD WIRES (Where "yyy" is the lead length in inches. For example, "L24" represents 24 inch long lead wires.)

CURRENT TRANSFORMER
MODEL J5

3-1/2" x 14-3/4"

PAGE No 2-6

REV 18DEC00



Specifications

Secondary sources 5 amps AC at rated F.S. primary current
 Nominal operating frequency range is 50-400HZ
 Thermal rating factor is 1.33 @ 30C for all ratios
 Insulation voltage class is 0.6KV BIL 10KV
 For indoor applications only

Reference documents IEEE C57.13, UL1244, CSA CAN3-C13-M83,
 and IEC 44-1

Enclosure is multi-layer tape buildup with heavy vinyl finish, color is
 black

Optional plate is XX phenolic

Options, contact Factory for information

2.0, 5.0, and 10 VAC output at F.S. primary amperage. Other non-
 standard ratings also available.

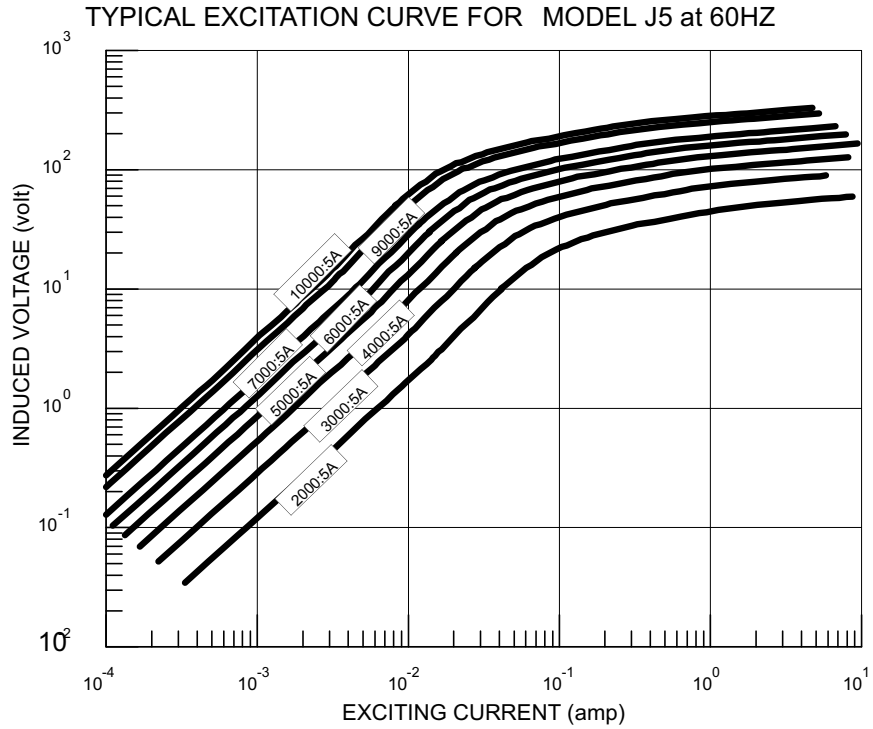
Custom lead wire lengths and types

1 A output at F.S. primary amperage. Other non-standard ratings
 also available

Thermal ratings above 1.33 for selected ratios

8-32 Screw Terminals or #16 AWG UL 1015 Lead Wires

3-1/2" x 14-3/4"	CURRENT TRANSFORMER MODEL J5
PAGE No 2-7	
REV 18DEC00	



NUMBER *	RATIO	ACCURACY @ 60HZ		NOMINAL WINDING RESISTANCE (ohm)
		± %	BURDEN (VA)	
J3-2000-00-xxx	2000:5A	1.0	65	0.60
J3-3000-00-xxx	3000:5A	1.0	100	0.95
J3-4000-00-xxx	4000:5A	1.0	100	1.20
J3-5000-00-xxx	5000:5A	1.0	100	1.50
J3-6000-00-xxx	6000:5A	1.0	100	1.90
J3-7000-00-xxx	7000:5A	1.0	100	2.10
J3-9000-00-xxx	9000:5A	1.0	100	2.60
J3-10000-00-xxx	10000:5A	1.0	100	3.32

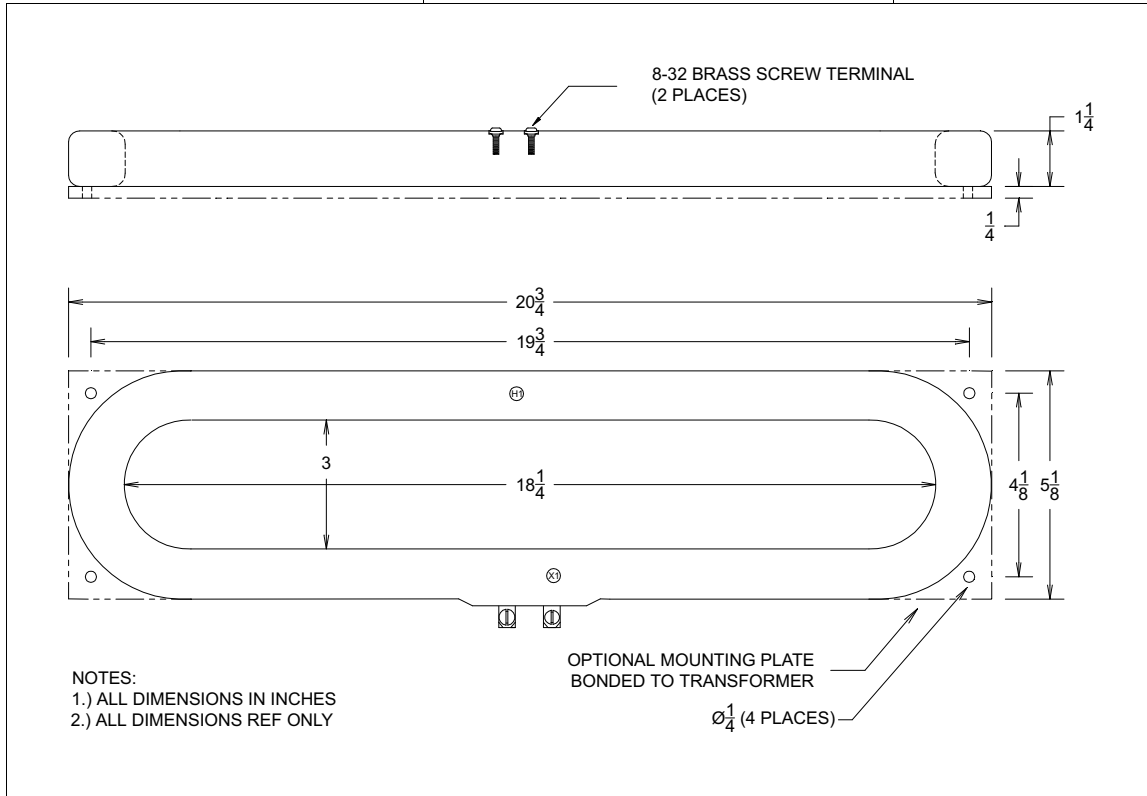
* "xxx" describes termination: "T" FOR BRASS SCREW TERMINALS and "Ly" FOR LEAD WIRES (Where "yy" is the lead length in inches. For example, "L24" represents 24 inch long lead wires.)

CURRENT TRANSFORMER
MODEL J6

3" x 18-1/4"

PAGE No 2-8

REV 18DEC00



Specifications

Secondary sources 5 amps AC at rated F.S. primary current
 Nominal operating frequency range is 50-400HZ
 Thermal rating factor is 1.33 @ 30C for all ratios
 Insulation voltage class is 0.6KV BIL 10KV
 For indoor applications only

Reference documents IEEE C57.13, UL1244, CSA CAN3-C13-M83,
 and IEC 44-1

Enclosure is multi-layer tape buildup with heavy vinyl finish, color is
 black

Optional plate is XX phenolic

Options, contact Factory for information

2.0, 5.0, and 10 VAC output at F.S. primary amperage. Other non-
 standard ratings also available.

Custom lead wire lengths and types

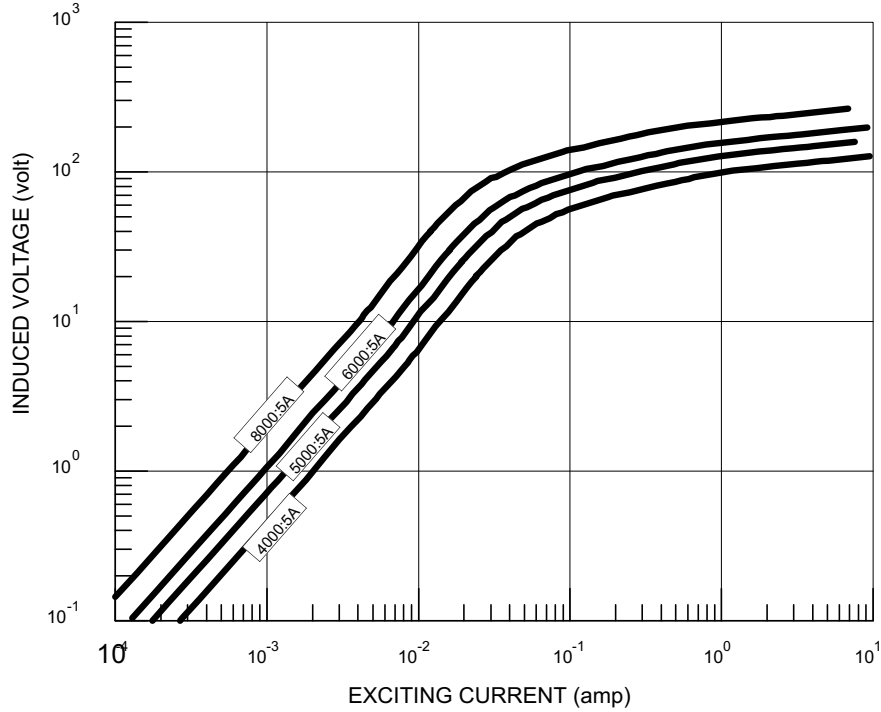
1 A output at F.S. primary amperage. Other non-standard ratings
 also available

Thermal ratings above 1.33 for selected ratios

8-32 Screw Terminals or #16 AWG UL 1015 Lead Wires

3" x 18-1/4"	CURRENT TRANSFORMER MODEL J6
PAGE No 2-9	
REV 18DEC00	

TYPICAL EXCITATION CURVE FOR MODEL J6 at 60HZ



NUMBER *	RATIO	ACCURACY @ 60HZ		NOMINAL WINDING RESISTANCE (ohm)
		± %	BURDEN (VA)	
J6-4000-00-xxx	4000:5A	1.0	100	1.21
J6-5000-00-xxx	5000:5A	1.0	100	1.54
J6-6000-00-xxx	6000:5A	1.0	100	1.87
J6-8000-00-xxx	8000:5A	1.0	100	2.53

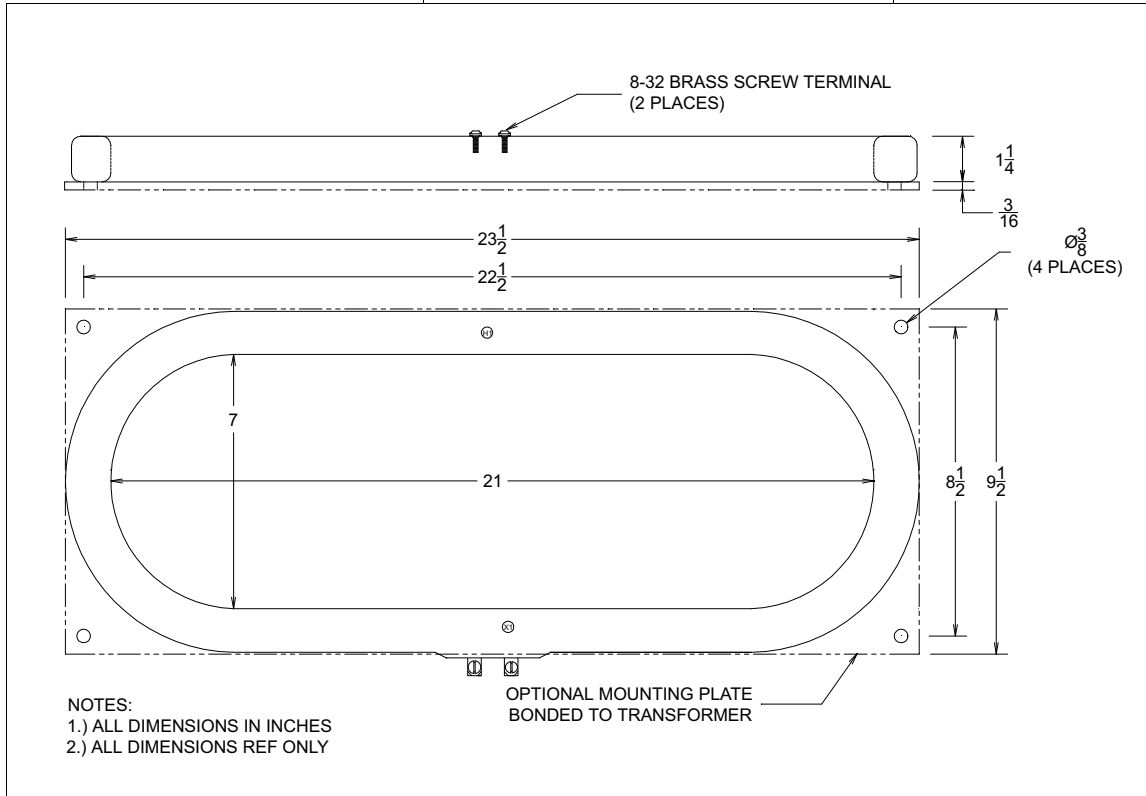
* "xxx" describes termination: "T" FOR BRASS SCREW TERMINALS and "Lyyy" FOR LEAD WIRES (Where "yyy" is the lead length in inches. For example, "L24" represents 24 inch long lead wires.)

CURRENT TRANSFORMER
MODEL J7/21

7" x 21"

PAGE No 2-10

18DEC00



Specifications

Secondary sources 5 amps AC at rated F.S. primary current
 Nominal operating frequency range is 50-400HZ
 Thermal rating factor is 1.33 @ 30C for all ratios
 Insulation voltage class is 0.6KV BIL 10KV
 For indoor applications only

Reference documents IEEE C57.13, UL1244, CSA CAN3-C13-M83,
 and IEC 44-1

Enclosure is multi-layer tape buildup with heavy vinyl finish, color is black

Optional plate is XX phenolic

Options, contact Factory for information

2.0, 5.0, and 10 VAC output at F.S. primary amperage. Other non-standard ratings also available.

Custom lead wire lengths and types

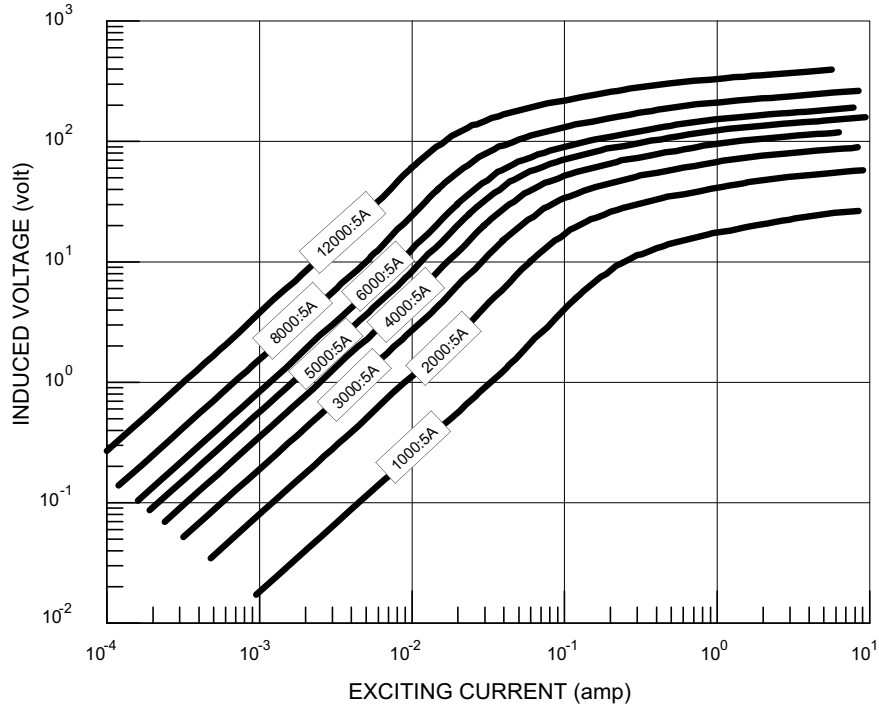
1 A output at F.S. primary amperage. Other non-standard ratings also available

Thermal ratings above 1.33 for selected ratios

8-32 Screw Terminals or #16 AWG UL 1015 Lead Wires

7" x 21"	CURRENT TRANSFORMER MODEL J7/21
PAGE No 2-11	
REV 18DEC00	

TYPICAL EXCITATION CURVE FOR MODEL J7/21 at 60HZ



NUMBER *	RATIO	ACCURACY @ 60HZ		NOMINAL WINDING RESISTANCE (ohm)
		± %	BURDEN (VA)	
J7/21-1000-00-xxx	1000:5A	1.0	6	0.31
J7/21-2000-00-xxx	2000:5A	1.0	40	0.60
J7/21-3000-00-xxx	3000:5A	1.0	100	0.91
J7/21-4000-00-xxx	4000:5A	1.0	100	1.21
J7/21-5000-00-xxx	5000:5A	1.0	100	1.51
J7/21-6000-00-xxx	6000:5A	1.0	100	1.84
J7/21-8000-00-xxx	8000:5A	1.0	100	2.50
J7/21-1200-00-xxx	12000:5A	1.0	100	3.90

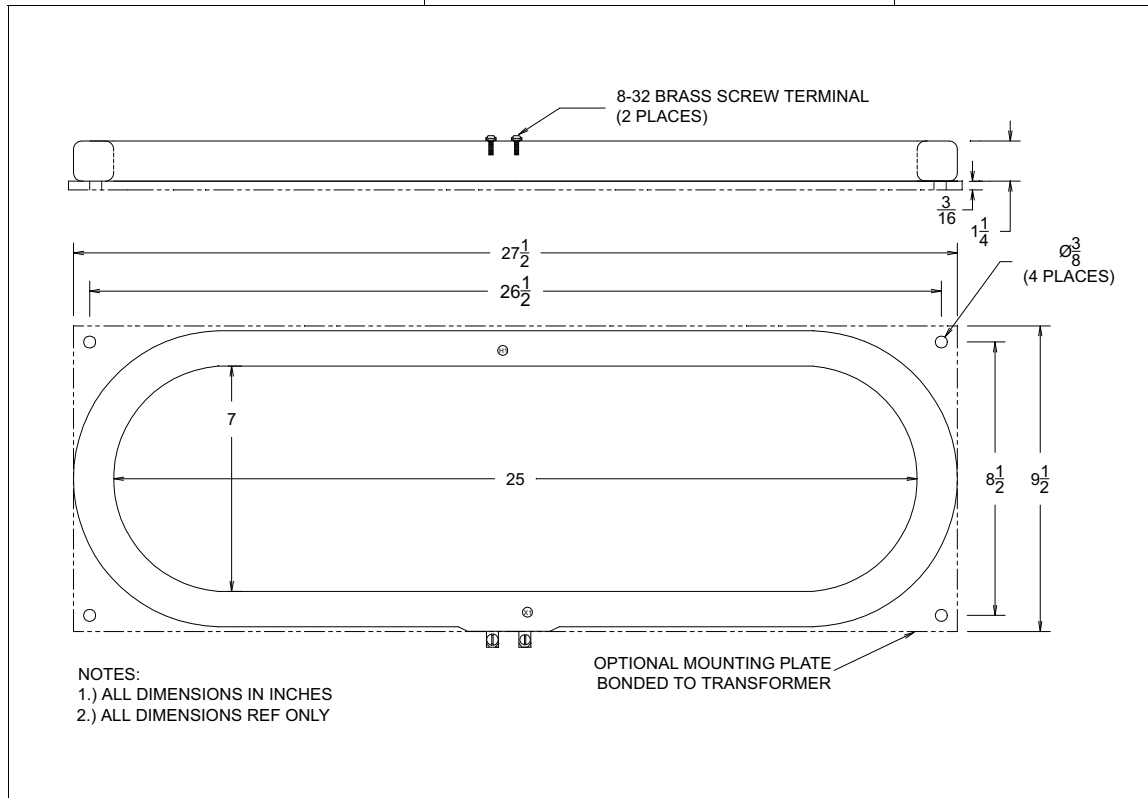
* "xxx" describes termination: "T" FOR BRASS SCREW TERMINALS and "Lyyy" FOR LEAD WIRES (Where "yyy" is the lead length in inches. For example, "L24" represents 24 inch long lead wires.)

CURRENT TRANSFORMER
MODEL J7/25

7" x 25"

PAGE No 2-12

REV 18DEC00



Specifications

Secondary sources 5 amps AC at rated F.S. primary current
 Nominal operating frequency range is 50-400HZ
 Thermal rating factor is 1.33 @ 30C for all ratios
 Insulation voltage class is 0.6KV BIL 10KV
 For indoor applications only

Reference documents IEEE C57.13, UL1244, CSA CAN3-C13-M83,
 and IEC 44-1

Enclosure is multi-layer tape buildup with heavy vinyl finish, color is black

Optional plate is XX phenolic

Options, contact Factory for information

2.0, 5.0, and 10 VAC output at F.S. primary amperage. Other non-standard ratings also available.

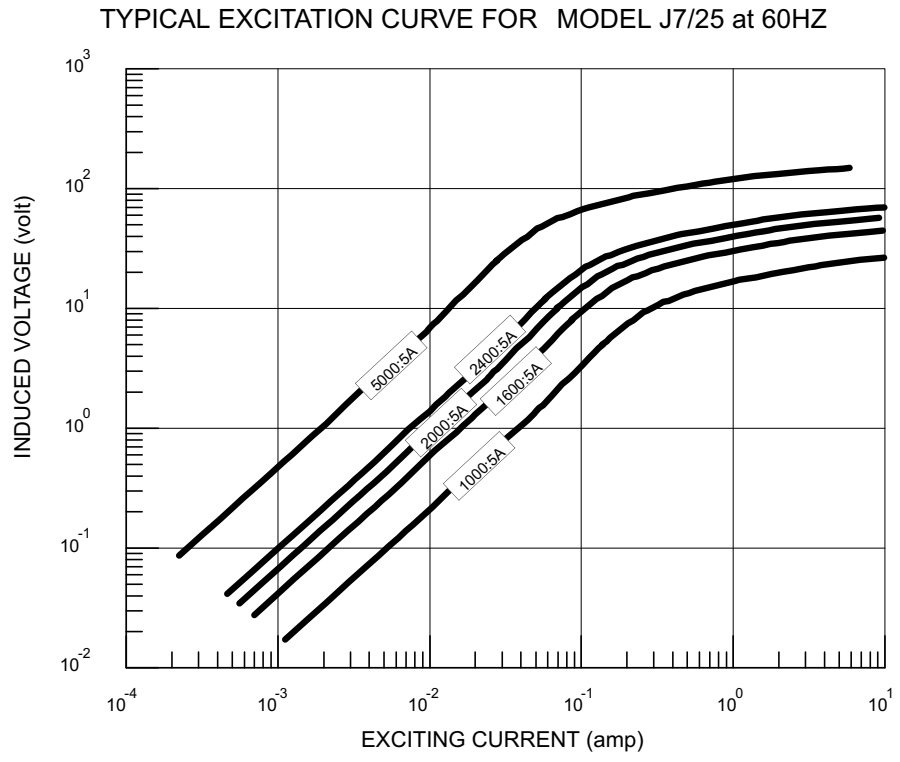
1, 0.2, and 0.1 A output at F.S. primary amperage. Other non-standard ratings also available

8-32 Screw Terminals or #16 AWG UL 1015 Lead Wires

Custom lead wire lengths and types

Thermal ratings above 1.33 for selected ratios.

7" x 25"	CURRENT TRANSFORMER MODEL J7/25
PAGE No 2-13	
REV 18DEC00	



NUMBER *	RATIO	ACCURACY @ 60HZ		NOMINAL WINDING RESISTANCE (ohm)
		± %	BURDEN (VA)	
J7/25-1000-00-xxx	2000:5A	1.0	6.0	0.35
J7/25-1600-00-xxx	1600:5A	1.0	20	0.50
J7/25-2000-00-xxx	2000:5A	1.0	35	0.60
J7/25-2400-00-xxx	2400:5A	1.0	50	0.75
J7/25-5000-00-xxx	5000:5A	1.0	100	1.50

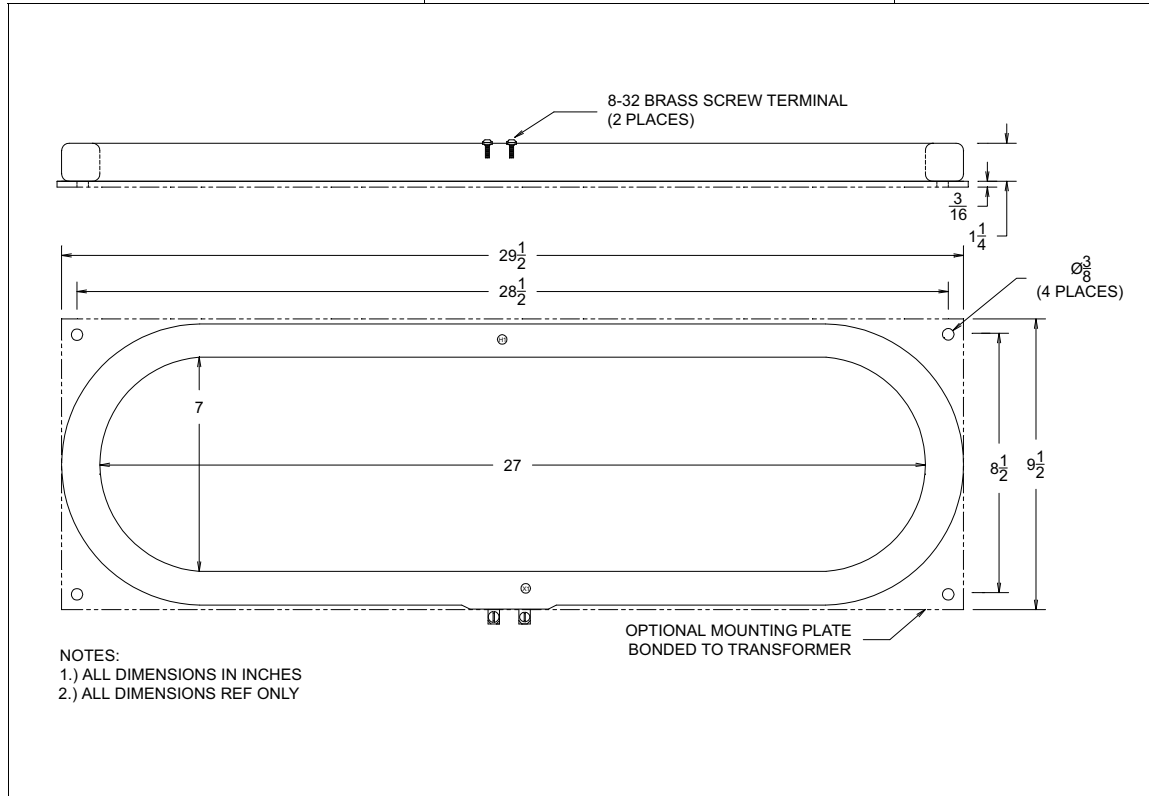
* "xxx" describes termination: "T" FOR BRASS SCREW TERMINALS and "Lyyy" FOR LEAD WIRES (Where "yyy" is the lead length in inches. For example, "L24" represents 24 inch long lead wires.)

CURRENT TRANSFORMER
MODEL J7/27

7" x 27"

PAGE No 2-14

REV 18DEC00



Specifications

Secondary sources 5 amps AC at rated F.S. primary current
 Nominal operating frequency range is 50-400HZ
 Thermal rating factor is 1.33 @ 30C for all ratios
 Insulation voltage class is 0.6KV BIL 10KV
 For indoor applications only

Reference documents IEEE C57.13, UL1244, CSA CAN3-C13-M83,
 and IEC 44-1

Enclosure is multi-layer tape buildup with heavy vinyl finish, color is
 black

Optional plate is XX phenolic

Options, contact Factory for information

2.0, 5.0, and 10 VAC output at F.S. primary amperage. Other non-
 standard ratings also available.

1, 0.2, and 0.1 A output at F.S. primary amperage. Other non-
 standard ratings also available

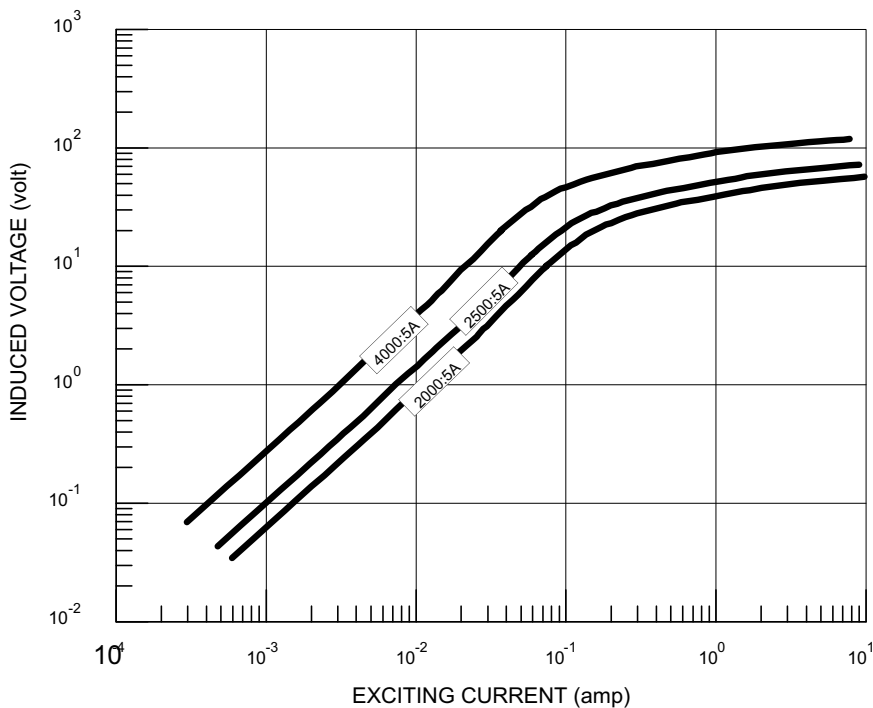
8-32 Screw Terminals or #16 AWG UL 1015 Lead Wires

Custom lead wire lengths and types

Thermal ratings above 1.33 for selected ratios.

7" x 27"	CURRENT TRANSFORMER MODEL J7/27
PAGE No 2-15	
REV 18DEC00	

TYPICAL EXCITATION CURVE FOR MODEL J7/27 at 60HZ



NUMBER *	RATIO	ACCURACY @ 60HZ		NOMINAL WINDING RESISTANCE (ohm)
		± %	BURDEN (VA)	
J7/27-2000-00-xxx	2000:5A	1.0	30	0.60
J7/27-2500-00-xxx	2500:5A	1.0	55	0.75
J7/27-4000-00-xxx	4000:5A	1.0	100	1.21

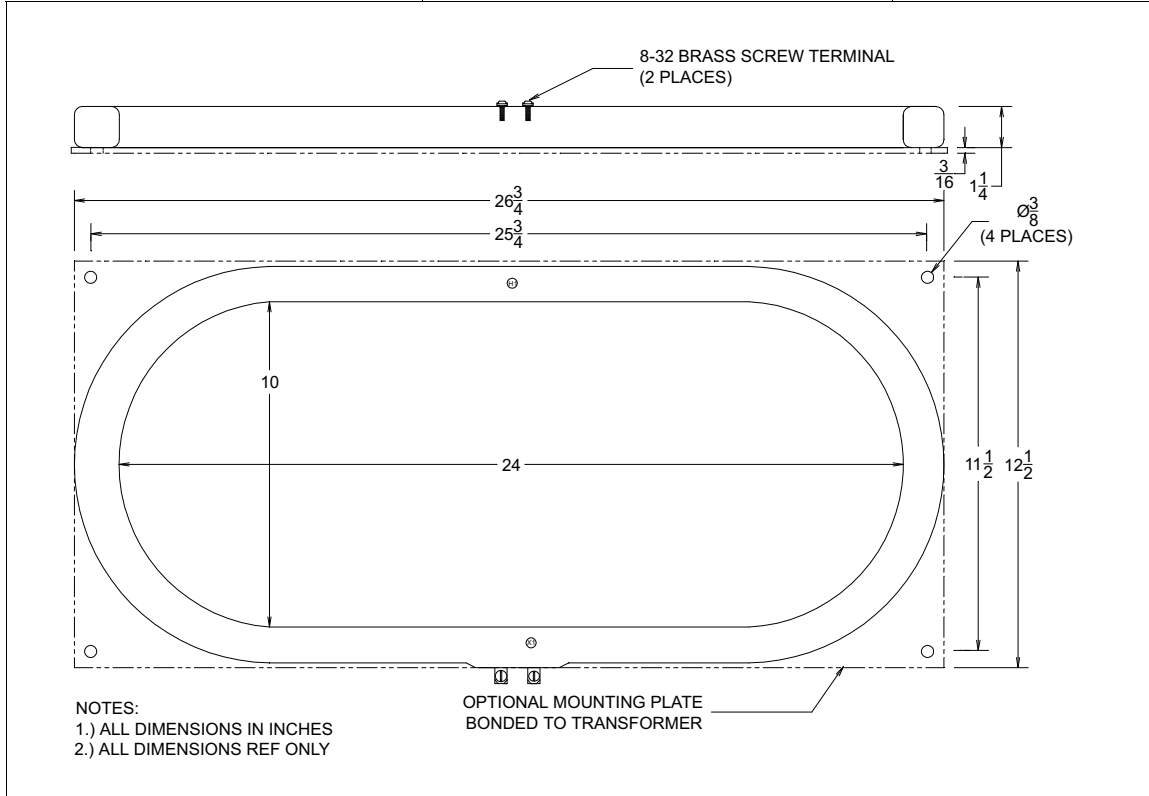
* "xxx" describes termination: "T" FOR BRASS SCREW TERMINALS and "Lyyy" FOR LEAD WIRES (Where "yyy" is the lead length in inches. For example, "L24" represents 24 inch long lead wires.)

CURRENT TRANSFORMER
MODEL J10/24

10" x 24"

PAGE No 2-16

REV 18DEC00



Specifications

Secondary sources 5 amps AC at rated F.S. primary current
 Nominal operating frequency range is 50-400HZ
 Thermal rating factor is 1.33 @ 30C for all ratios
 Insulation voltage class is 0.6KV BIL 10KV
 For indoor applications only

Reference documents IEEE C57.13, UL1244, CSA CAN3-C13-M83,
 and IEC 44-1

Enclosure is multi-layer tape buildup with heavy vinyl finish, color is black

Optional plate is XX phenolic

Options, contact Factory for information

2.0, 5.0, and 10 VAC output at F.S. primary amperage. Other non-standard ratings also available.

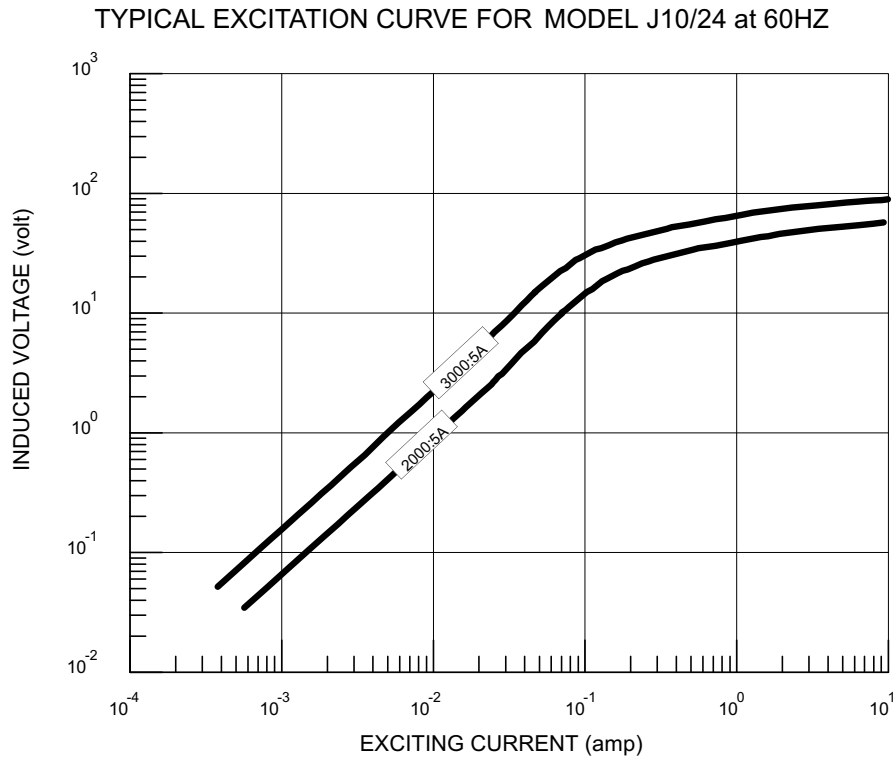
1, 0.2, and 0.1 A output at F.S. primary amperage. Other non-standard ratings also available

8-32 Screw Terminals or #16 AWG UL 1015 Lead Wires

Custom lead wire lengths and types

Thermal ratings above 1.33 for selected ratios.

10" x 24"	CURRENT TRANSFORMER MODEL J10/24
PAGE No 2-17	
REV 18DEC00	



NUMBER *	RATIO	ACCURACY @ 60HZ		NOMINAL WINDING RESISTANCE (ohm)
		± %	BURDEN (VA)	
J10/24-2000-00-xxx	2000:5A	1.0	30	0.60
J10/24-3000-00-xxx	3000:5A	1.0	85	0.91

* "xxx" describes termination: "T" FOR BRASS SCREW TERMINALS and "Lyyy" FOR LEAD WIRES (Where "yyy" is the lead length in inches. For example, "L24" represents 24 inch long lead wires.)