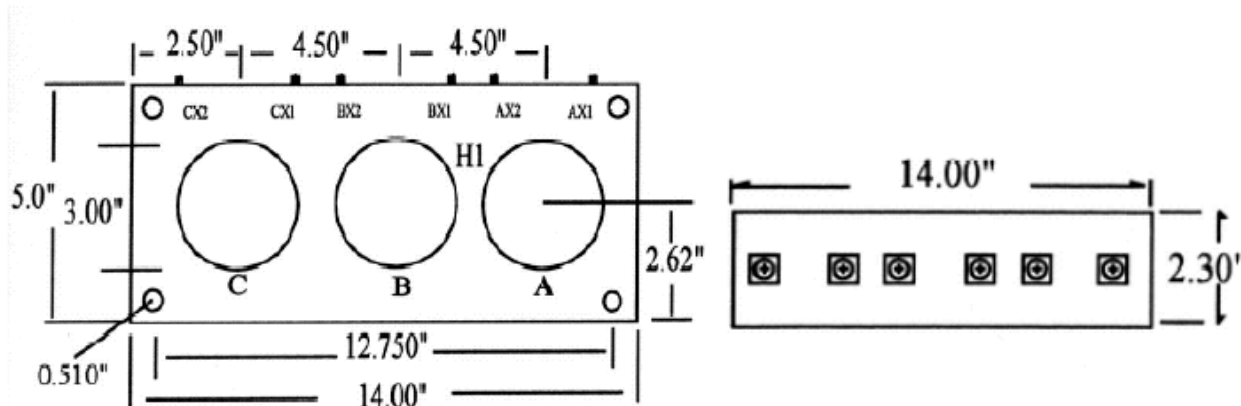


THREE PHASE
Current Transformers

Window Diameter: 3.0"
Continuous Thermal Rating: 1.33 at 30 C. amb.;
1.0 at 55 C. amb. Average.

Application: Ammeters and Wattmeters and Relays.
Insulation Class: 0.6 kV. BIL 10kV. full wave 50-400 Hz.
Fully encapsulated.

Standard 5 amp secondary, others available.



Model nbr.

3P3045

To order, please complete the model number with the appropriate suffix.
eg. 3P3045-600

Catalogue nbr. Suffix	Current Ratio	Relay Class	ANSI Metering Class @ 60Hz			
			BO.1	BO.2	BO.5	BO.9
-100	100:5	-	2.4	4.8	-	-
-150	150:5	-	1.2	2.4	4.8	-
-200	200:5	-	0.6	1.2	2.4	
-250	250:5	-	0.3	0.6	1.2	2.4
-300	300:5	-	0.3	0.6	1.2	2.4
-400	400:5	C10	0.3	0.3	0.6	1.2
-500	500:5	C10	0.3	0.3	0.6	0.6
-600	600:5	C10	0.3	0.3	0.3	0.6
-750	750:5	C20	0.3	0.3	0.3	0.6
-800	800:5	C10	0.3	0.3	0.3	0.6
-1000	1000:5	C10	0.3	0.3	0.3	0.3
-1200	1200:5	C10	0.3	0.3	0.3	0.3
-1500	1500:5	C10	0.3	0.3	0.3	0.3
-1600	1600:5	-	0.3	0.3	0.3	0.3

- ▶ Terminals are brass No. 10-32 UNC.
- ▶ Approximate weight 12 lb.
- ▶ Additional ratios available.

Note: ratios of 800:5 and greater have an Rf. of 1.0 @ 30C amb.