

# ELECTRO-MECHANICAL COUNTERS

These rugged electro-mechanical counters are available in various voltage ranges to accommodate the most demanding industrial applications at OEM prices.



Miniature panel mount, adding counter with manual push-button reset.

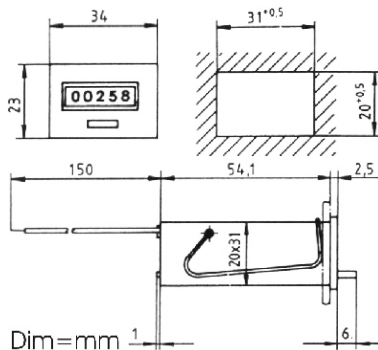
**Supply:** 6, 12, 24vdc, 115, 230vac

**Power Consumption:**

.03w @12vdc, 0.7w @48vdc

**Dim:** 53.8 (2.12)W x 23.4 (.92)H  
x 54.1 (2.13)D

**Digits Height:** 3.18 (.125)



Ce compteur totalisateur miniature avec réarmement manuel est conçu pour le montage en saillie du panneau.

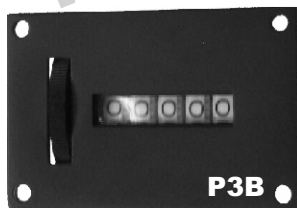
**Alimentation:** 6, 12, 24vcc, 115, 230vca

**Consommation:**

.03w @12vcc, 0.7w @ 48vcc

**Dim:** 53.8 (2.12)L x 23.4 (.92)H x 54.1 (2.13)P

**Caractères:** 3.18 (0.125)H



Five digit, impulse counter (600/min) with thumbwheel reset.

**Supply:** 12, 24vdc, 115, 230vac

**Power Consumption:** 6w

**Dim:** 69.9 (2.75)W x 48.8 (1.88)H x 57.2 (2.25)D

**Digits Height:** 6.4 (0.25)

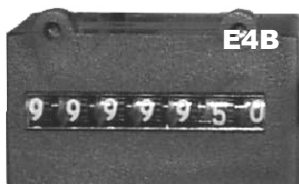
Compteur d'impulsions (600/min) à cinq chiffres avec réarmement à roulette.

**Alimentation:** 12, 24vcc, 115, 230vca

**Consommation:** 6w

**Dim:** 69.9 (2.75)L x 48.8 (1.88)H x 57.2 (2.25)P

**Caractères:** 6.4 (0.25)H



Seven digit, non resettable, impulse counter (600/min). Tamper proof version available.

**Supply:** 6, 12, 24vdc, 24, 115, 230vac

**Power Consumption:** 2.5mw max.

**Dim:** 36.8 (1.45)W x 21.6 (.85)H x 35.6 (1.4)D

**Digits Height:** 4.8 (.19)

Compteur d'impulsions (600/min) à sept chiffres sans réarmement. Version antitraffiquage disponible.

**Alimentation:** 6, 12, 24vcc, 24, 115, 230vca

**Consommation:** 2.5mw max.

**Dim:** 36.8 (1.45)L x 21.6 (.85)H x 35.6 (1.4)P

**Caractères:** 4.8 (.19)H