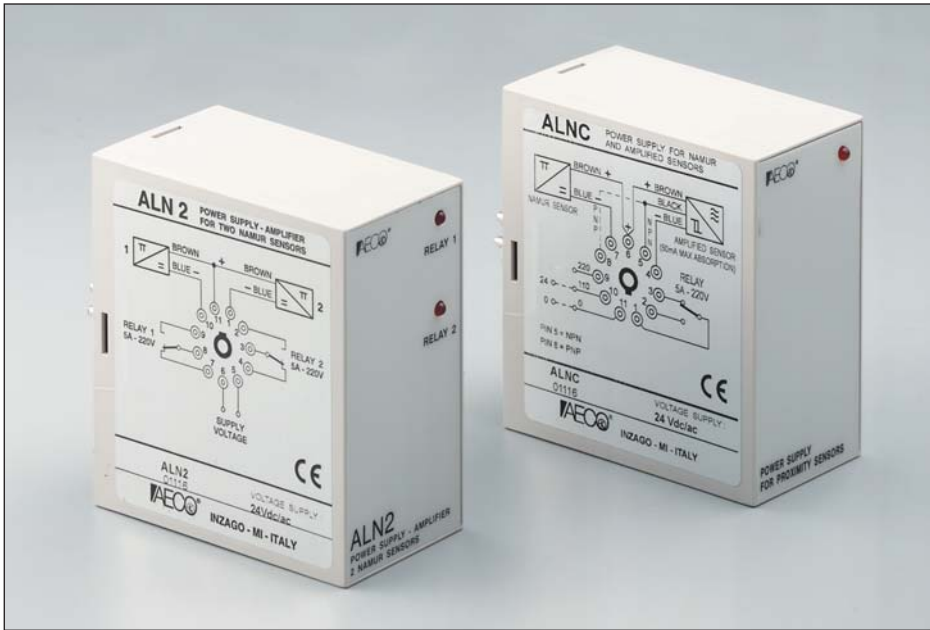


POWER SUPPLIES - AMPLIFIERS ALNC - ALN2



SPECIFICATIONS

These instruments are made up of a transformer an amplifier and a transistor, a rectifying circuit and one or two output relays with changeover contacts, respectively in the ALNC and ALN2 types. They are used to supply with a stabilized and level 12 Vdc voltage inductive and capacitive sensors and photocells. The electronic unit of the two models is assembled in a plastic container with 11 Pin socket.

The ALNC model is very versatile as it permits the use of a sensor with NPN, PNP or NAMUR logic. The ALN2 type allows for the use of two NAMUR sensor.

IDENTIFICATION REFERENCES

AL N C

AL N 2

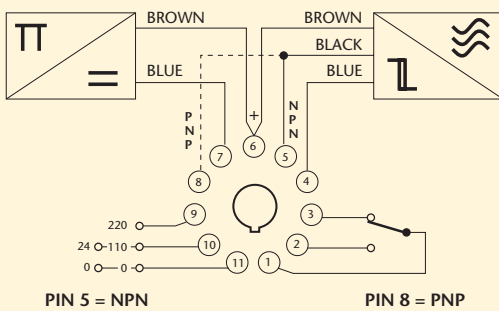
ALNC: Power supply - amplifier for n. 1 NAMUR sensor or n. 1 amplified sensor.
Specify the power supply: 24 Vac/dc or 110/220 Vac.

ALN2: Power supply - amplifier for n. 2 NAMUR sensors.
Specify the power supply: 24 Vac/dc or 110 Vac or 220 Vac.

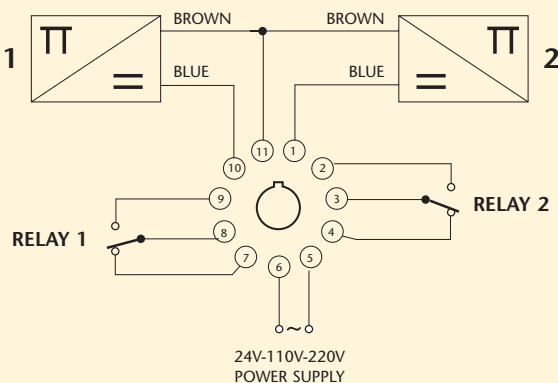
TECHNICAL CHARACTERISTICS

Power supply	24VDC/AC
Power supply \pm 15%	110/220VAC 50-60Hz
Output current	12 VDC
Absorption	3VA
Max output current	50 mA
Temperature range	-20 \div + 60°C
Degree of protection	IP 40
LED	incorporated
Type ALNC relay ouput 1 changeover	5A 220VAC
Type ALN2 2 relays ouput 1 changeover	5A 220VAC

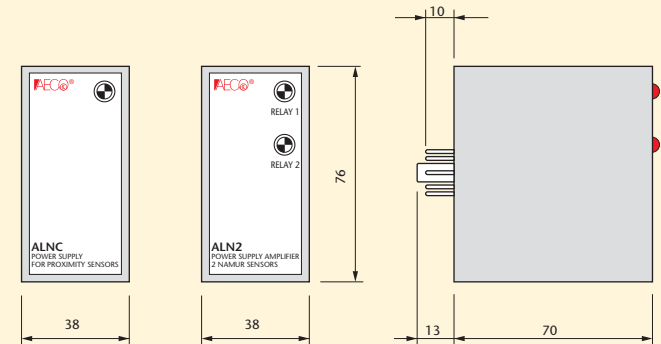
WIRING DIAGRAMS ALNC



WIRING DIAGRAMS ALN2



DIMENSIONS (mm)



ALNC

ALN2

For a correct fixing of the AECO units it is recommended to use socket B8 an B11 with fixing spring MF. (page 102)