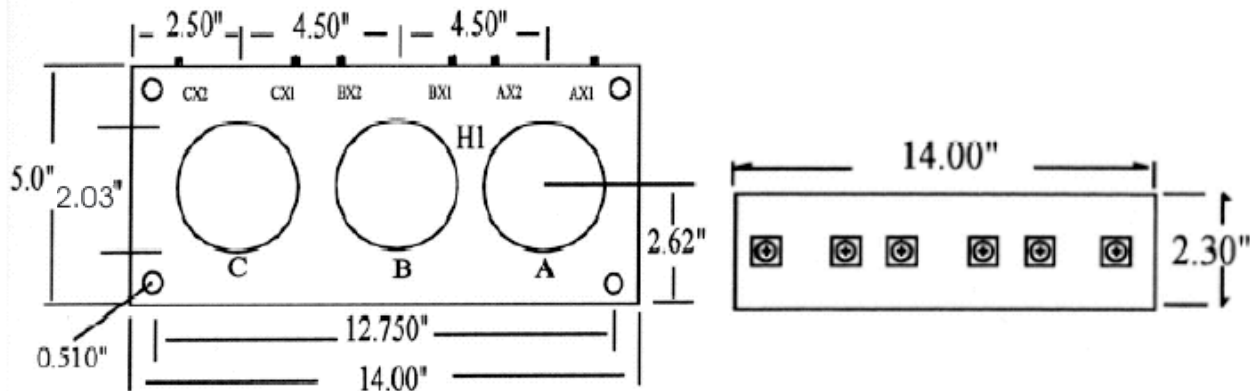


**THREE PHASE**  
**Current Transformers**

Window Diameter: 2.03"  
Continuous Thermal Rating: 1.33 at 30 C. amb.;  
1.0 at 55 C. amb. Average.

Application: Ammeters and Wattmeters & Watthourmeters.  
Insulation Class: 0.6 kV. BIL 10kV. full wave 50-400 Hz.  
Fully encapsulated.

Standard 5 amp secondary, others available.



Model nbr.	Catalogue nbr. Suffix	Current Ratio	Relay Class	ANSI Metering Class @ 60Hz			
				BO.1	BO.2	BO.5	BO.9
CT3P2045	-100	100:5	-	1.2	1.2	2.4	4.8
	-150	150:5	-	0.6	0.6	1.2	2.4
	-200	200:5	-	0.3	0.3	1.2	1.2
	-250	250:5	C10	0.3	0.3	0.6	0.6
	-300	300:5	C10	0.3	0.3	0.3	0.6
	-400	400:5	C10	0.3	0.3	0.3	0.6
	-500	500:5	C20	0.3	0.3	0.3	0.3
	-600	600:5	C20	0.3	0.3	0.3	0.3
	-750	750:5	C20	0.3	0.3	0.3	0.3
	-800	800:5	C10	0.3	0.3	0.3	0.3
	-1000	1000:5	C10	0.3	0.3	0.3	0.3
	-1200	1200:5	C10	0.3	0.3	0.3	0.3
	-1500	1500:5	C10	0.3	0.3	0.3	0.3
-1600	1600:5	C10	0.3	0.3	0.3	0.3	

To order, please complete the model number with the appropriate suffix.  
eg. CT3P2045-100

- ▶ Terminals are brass No. 10-32 UNC.
- ▶ Approximate weight 12 lb.
- ▶ Additional ratios available.

Note: Ratios 800:5 and greater have an Rf. of 1.0 @ 30C amb.