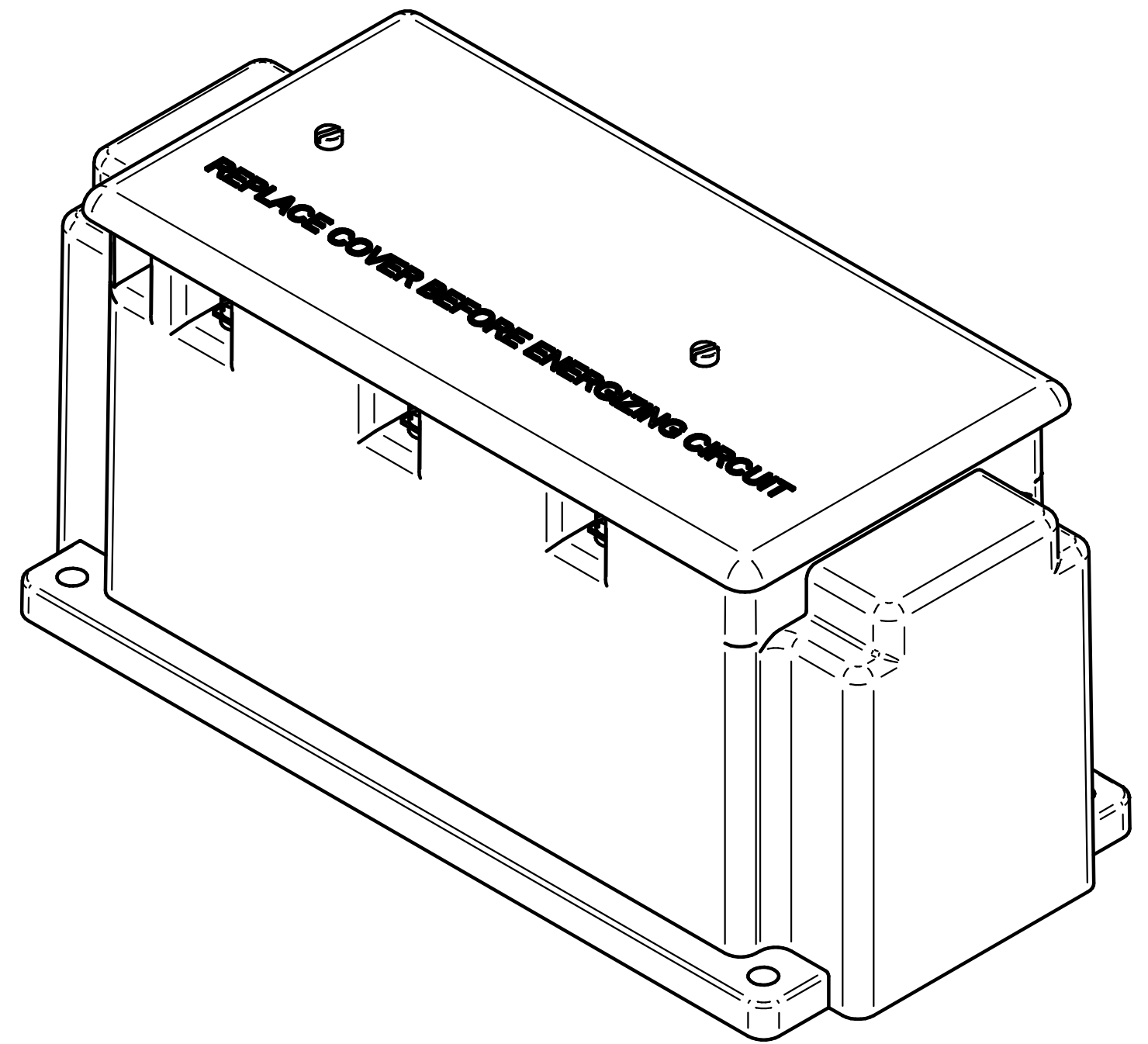
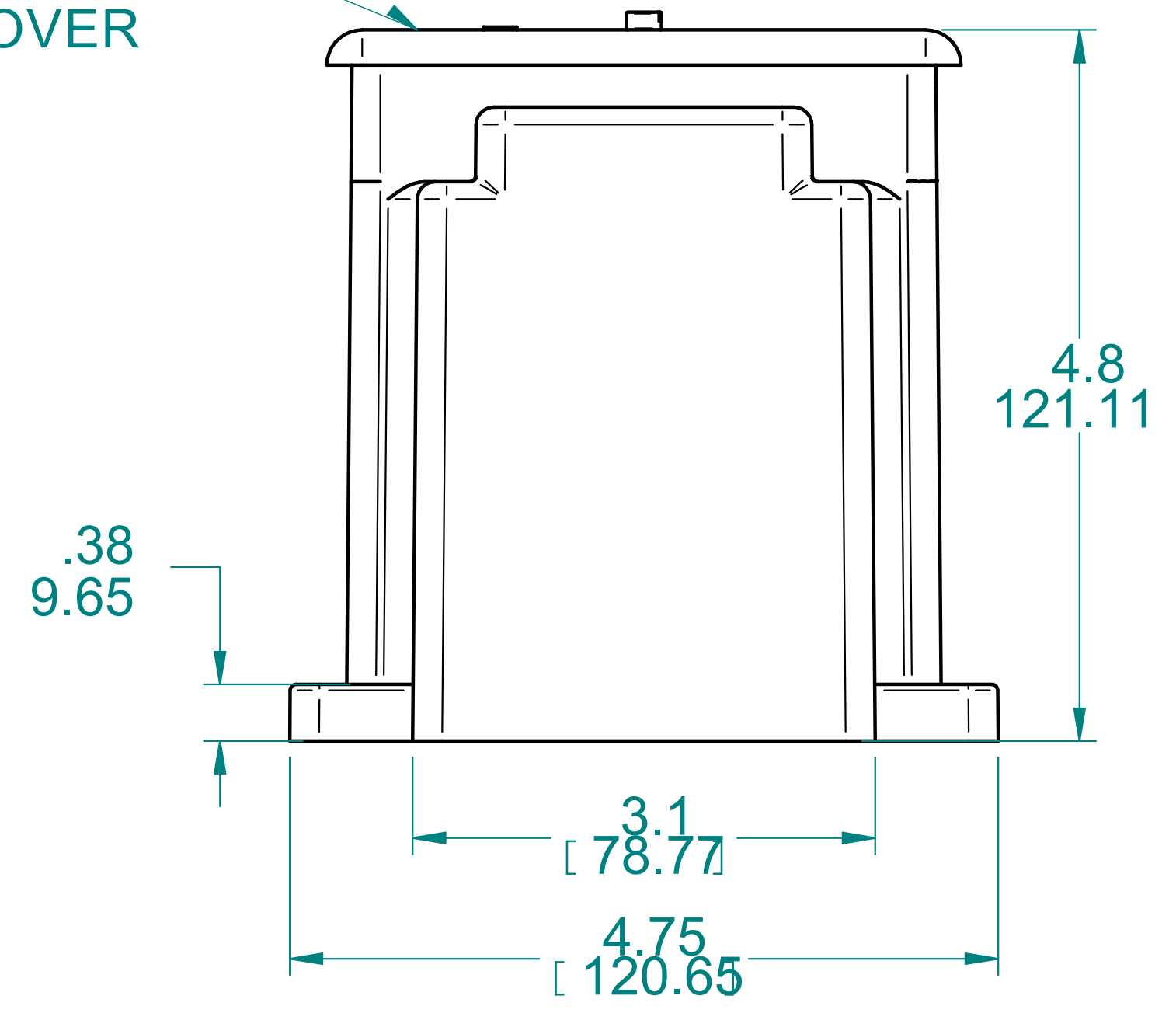
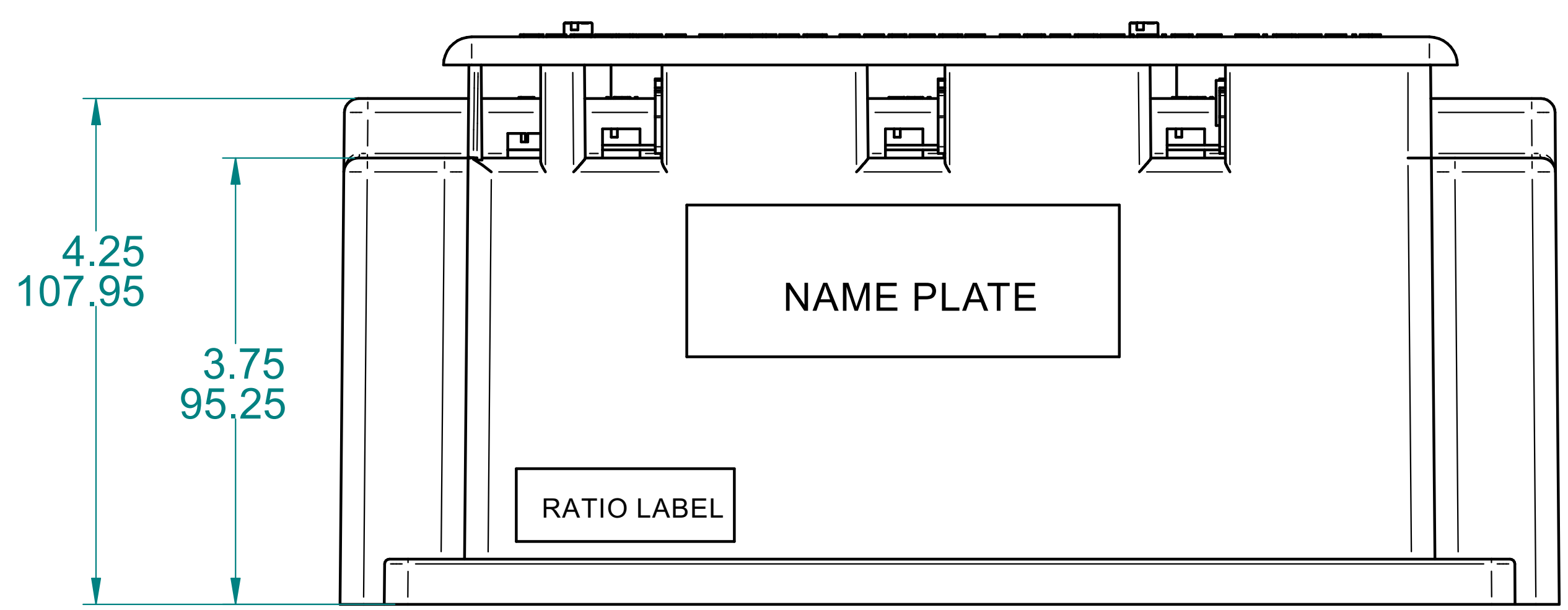


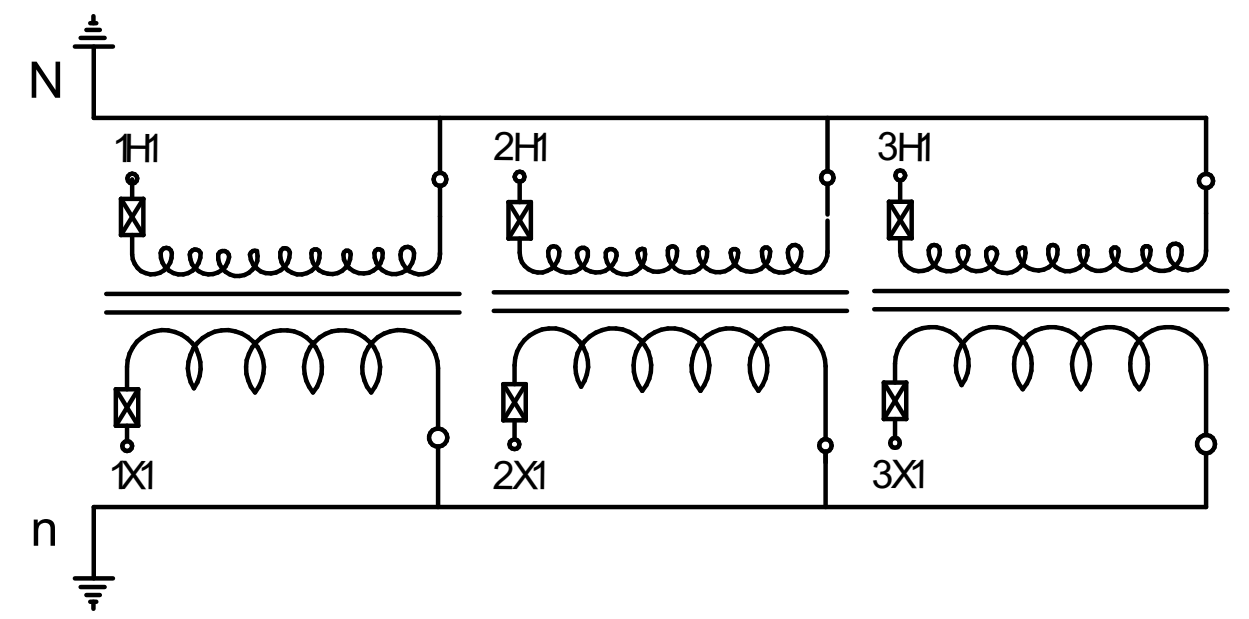
3 X CLASS CC REJECTION STYLE FUSE
(SEE TABLE FOR RATINGS)
SUPPLIED WITH BUSSMANN SERIES KTK-R

3 X SECONDARY FUSES
SUPPLIED WITH BUSSMANN SERIES
BBS 1.6 AMP RATING

TRANSPARENT
TERMINAL
COVER



Catalogue #	VOLTAGE RATING (L-N)	RATIO	ACCURACY @ 60Hz	THERMAL VA RATING @30 deg C / PHASE	THERMAL VA RATING @55 deg C / PHASE	PRIMARY FUSE RATINGS(AMPS)
PT300-069FF	69 : 120 V	0.58 : 1	0.6W , 1.2X	150	100	5.0
PT300-120FF	120 : 120 V	1 : 1	0.6W , 1.2X	150	100	4.0
PT300-240FF	240 : 120 V	2 : 1	0.6W , 1.2X	150	100	2.0
PT300-277FF	277 : 120 V	2.3 : 1	0.6W , 1.2X	150	100	2.0
PT300-300FF	300 : 120 V	2.5 : 1	0.6W , 1.2X	150	100	1.5
PT300-346FF	346 : 120 V	2.88 : 1	0.6W , 1.2X	150	100	1.5



NOTES :

1. ALL DIMENSIONS ARE IN INCHES (mm beneath in).
2. FRQUENCY : 60Hz (UNLESS SPECIFIED)
3. I.L : 600 V , 10kv BIL FULL WAVE
4. H / X / N / n TERMINALS ARE 8-32UNC BRASS FEMALE INSERT WITH BRASS SCREW , ONE PLAIN WASHER & ONE BRONZE LOCK WASHER.
5. AGENCY APPROVALS : UL & cUL RECOGNIZED FILE #E205113,CSA CERTIFIED FILE#231838 .

REV	ECO/ECN	DATE	BY	REVISION DESCRIPTION
D		20.03.2020	G.I	FUSE RAING COLUMN ADD , CSA APPROVAL ADD
C		04.01.2020	G.I	SPECIFIC TOLERANCE ADDED TO 8.5" & 4.0"
B		30.12.2019	G.I	TERMINAL UPDATED TO 8-32UNC FROM 10-32UNF

		TITLE RESIN ENCAPSULATED PLASTIC CASE VT	
CLASS FORM	TYPE	SCALE none	SERIES ECO/ECN
DRAWN G.I	CHG C.P	DATE 15.10.2019	DATE 15.10.2019
SIZE B	NUMBER LPTE01495-0002	SHEET 1	OF 1